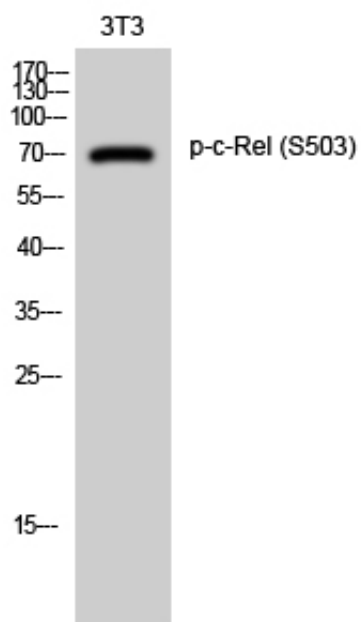




## c-Rel (phospho Ser503) Polyclonal Antibody

Catalog_no :	AP0852
Applications :	WB,IHC-p,ELISA
Reactivity :	Human
Category :	抗原抗体
Size :	100µg/50µg/20µg
Gene_name :	REL
Protein_name :	Proto-oncogene c-Rel
Humangene_id :	<a href="#">5966</a>
Humanswissprot_no :	<a href="#">Q04864</a>
Immunogen :	The antiserum was produced against synthesized peptide derived from human Rel around the phosphorylation site of Ser503. AA range:470-519
Specificity :	Phospho-c-Rel (S503) Polyclonal Antibody detects endogenous levels of c-Rel protein only when phosphorylated at S503.
Formulation :	Liquid in PBS containing 50% glycerol, 0.5% BSA and 0.02% sodium azide.
Source :	Rabbit
Dilution :	Western Blot: 1/500 - 1/2000. Immunohistochemistry: 1/100 - 1/300. ELISA: 1/5000. Not yet tested in other applications.
Purification :	The antibody was affinity-purified from rabbit antiserum by affinity-chromatography using epitope-specific immunogen.
Concentration :	1 mg/ml
Storage_stability :	-20°C/1 year
Msds :	<a href="#">MSDS_Antibody.pdf</a>
Other_name :	REL; Proto-oncogene c-Rel

## Product Images



Western Blot analysis of 3T3 cells using Phospho-c-Rel (S503) Polyclonal Antibody diluted at 1 : 1000 cells nucleus extracted by Minute TM Cytoplasmic and Nuclear Fractionation kit (SC-003, Invent biotech, MN, USA).