

14-3-3 ζ (phospho Ser58) Polyclonal Antibody

Catalog_no :	AP0853
Applications :	WB,IHC-p,IF,ELISA
Reactivity :	Human,Mouse,Rat
Category :	抗原抗体
Size :	100 μ g/50 μ g/20 μ g
Gene_name :	YWHAZ
Protein_name :	14-3-3 protein zeta/delta
Humangene_id :	7534
Humanswissprot_no :	P63104
Mousegene_id :	22631
Mouseswissprot_no :	P63101
Ratgene_id :	25578
Ratswissprot_no :	P63102
Immunogen :	The antiserum was produced against synthesized peptide derived from human 14-3-3 zeta around the phosphorylation site of Ser58. AA range:24-73
Specificity :	Phospho-14-3-3 ζ (S58) Polyclonal Antibody detects endogenous levels of 14-3-3 ζ protein only when phosphorylated at S58.
Formulation :	Liquid in PBS containing 50% glycerol, 0.5% BSA and 0.02% sodium azide.
Source :	Rabbit
Dilution :	Western Blot: 1/500 - 1/2000. Immunohistochemistry: 1/100 - 1/300. Immunofluorescence: 1/200 - 1/1000. ELISA: 1/40000. Not yet tested in other applications.
Purification :	The antibody was affinity-purified from rabbit antiserum by affinity-chromatography using epitope-specific immunogen.
Concentration :	1 mg/ml
Storage_stability :	-20°C/1 year

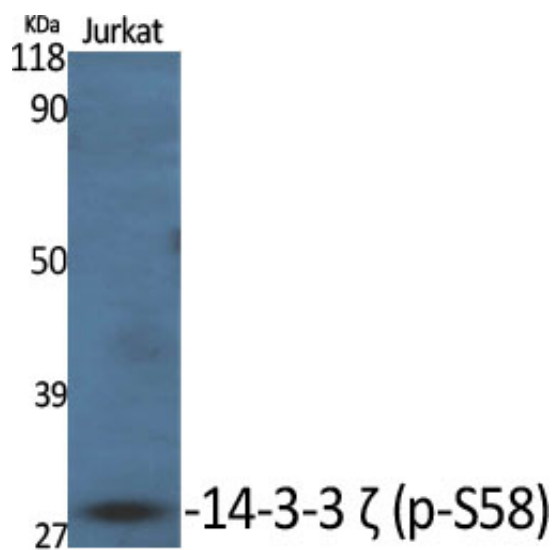


Msd : MSDS_Antibody.pdf

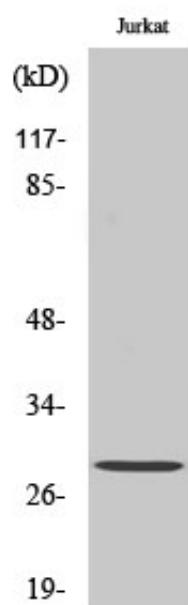
Other_name : YWHAZ; 14-3-3 protein zeta/delta; Protein kinase C inhibitor protein 1; KCIP-1

Molecular Weight : 30KD

Product Images



Western Blot analysis of various cells using Phospho-14-3-3 ζ (S58) Polyclonal Antibody diluted at 1 : 2000



Western Blot analysis of Jurkat cells using Phospho-14-3-3 ζ (S58) Polyclonal Antibody diluted at 1 : 2000