

Adducin  $\alpha/\beta$  (phospho Ser726/713) Polyclonal Antibody

Catalog_no :	AP0854
Applications :	WB,IHC-p,IF,ELISA
Reactivity :	Human,Mouse,Rat
Category :	抗原抗体
Size :	100 $\mu$ g/50 $\mu$ g/20 $\mu$ g
Gene_name :	ADD1/ADD2
Protein_name :	Alpha-adducin/Beta-adducin
Humangene_id :	<a href="#">118/119</a>
Humanswissprot_no :	<a href="#">P35611/P35612</a>
Mousegene_id :	<a href="#">11518/11519</a>
Ratgene_id :	<a href="#">24170/24171</a>
Ratswissprot_no :	<a href="#">Q63028/Q05764</a>
Immunogen :	The antiserum was produced against synthesized peptide derived from human ADD1 around the phosphorylation site of Ser726. AA range:688-737
Specificity :	Phospho-Adducin $\alpha/\beta$ (S726/713) Polyclonal Antibody detects endogenous levels of Adducin $\alpha/\beta$ protein only when phosphorylated at S726/713.
Formulation :	Liquid in PBS containing 50% glycerol, 0.5% BSA and 0.02% sodium azide.
Source :	Rabbit
Dilution :	Western Blot: 1/500 - 1/2000. Immunohistochemistry: 1/100 - 1/300. Immunofluorescence: 1/200 - 1/1000. ELISA: 1/40000. Not yet tested in other applications.
Purification :	The antibody was affinity-purified from rabbit antiserum by affinity-chromatography using epitope-specific immunogen.
Concentration :	1 mg/ml
Storage_stability :	-20°C/1 year
Msds :	<a href="#">MSDS_Antibody.pdf</a>



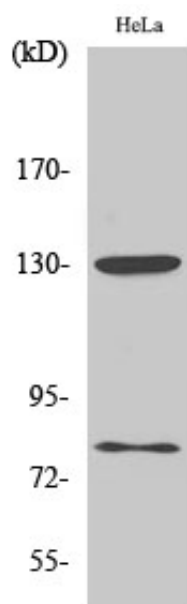
Other\_name : ADD1; ADDA; Alpha-adducin; Erythrocyte adducin subunit alpha; ADD2; ADDB; Beta-adducin; Erythrocyte adducin subunit beta

---

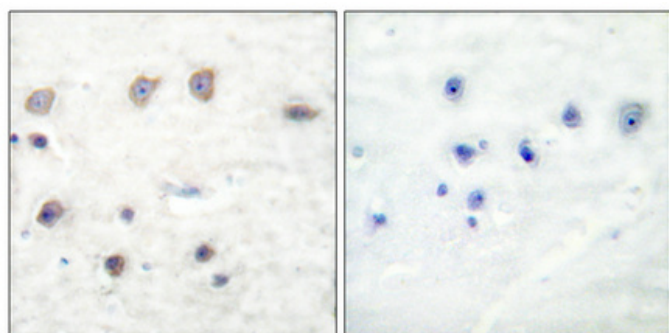
Molecular Weight : 80KD

---

## Product Images



Western Blot analysis of various cells using Phospho-Adducin  $\alpha/\beta$  (S726/713) Polyclonal Antibody diluted at 1 : 1000



Immunohistochemical analysis of paraffin-embedded Human breast cancer. Antibody was diluted at 1:100(4°, overnight). High-pressure and temperature Tris-EDTA, pH8.0 was used for antigen retrieval. Negative control (right) obtained from antibody was pre-absorbed by immunogen peptide.