

Amyloid- $\beta$  (phospho Thr743) Polyclonal Antibody

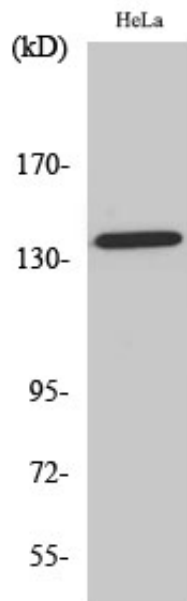
Catalog_no :	AP0855
Applications :	WB,IHC-p,IF,ELISA
Reactivity :	Human,Mouse,Rat
Category :	抗原抗体
Size :	100 $\mu$ g/50 $\mu$ g/20 $\mu$ g
Gene_name :	APP
Protein_name :	Amyloid beta A4 protein
Humangene_id :	<a href="#">351</a>
Humanswissprot_no :	<a href="#">P05067</a>
Mousegene_id :	<a href="#">11820</a>
Mouseswissprot_no :	<a href="#">P12023</a>
Ratgene_id :	<a href="#">54226</a>
Ratswissprot_no :	<a href="#">P08592</a>
Immunogen :	The antiserum was produced against synthesized peptide derived from human Amyloid beta A4 around the phosphorylation site of Thr743/668. AA range:711-760
Specificity :	Phospho-Amyloid- $\beta$ (T743) Polyclonal Antibody detects endogenous levels of Amyloid- $\beta$ protein only when phosphorylated at T743.
Formulation :	Liquid in PBS containing 50% glycerol, 0.5% BSA and 0.02% sodium azide.
Source :	Rabbit
Dilution :	Western Blot: 1/500 - 1/2000. Immunohistochemistry: 1/100 - 1/300. Immunofluorescence: 1/200 - 1/1000. ELISA: 1/10000. Not yet tested in other applications.
Purification :	The antibody was affinity-purified from rabbit antiserum by affinity-chromatography using epitope-specific immunogen.
Concentration :	1 mg/ml
Storage_stability :	-20°C/1 year



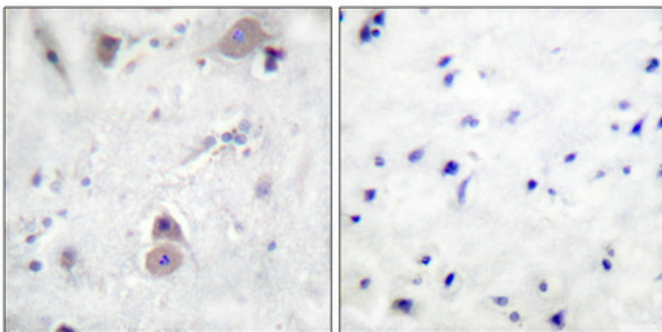
---

MsdS :	<u>MSDS_Antibody.pdf</u>
Other_name :	<u>APP; A4; AD1; Amyloid beta A4 protein; ABPP; APPI; APP; Alzheimer disease amyloid protein; Cerebral vascular amyloid peptide; CVAP; PreA4; Protease nexin-II; PN-II</u>
Molecular Weight :	<u>140KD</u>

## Product Images



Western Blot analysis of various cells using Phospho-Amyloid- $\beta$  (T743) Polyclonal Antibody



Immunohistochemical analysis of paraffin-embedded Human breast cancer. Antibody was diluted at 1:100(4 $^{\circ}$ , overnight). High-pressure and temperature Tris-EDTA, pH8.0 was used for antigen retrieval. Negative control (right) obtained from antibody was pre-absorbed by immunogen peptide.