

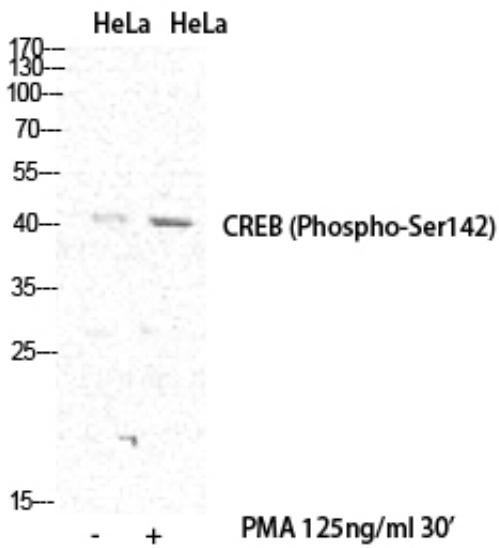
CREB-1 (phospho Ser142) Polyclonal Antibody

Catalog_no :	AP0856
Applications :	WB,IHC-p,IF,ELISA
Reactivity :	Human,Mouse,Rat
Category :	抗原抗体
Size :	100µg/50µg/20µg
Gene_name :	CREB1
Protein_name :	Cyclic AMP-responsive element-binding protein 1
Humangene_id :	1385
Humanswissprot_no :	P16220
Mousegene_id :	12912
Mouseswissprot_no :	Q01147
Ratgene_id :	81646
Ratswissprot_no :	P15337
Immunogen :	The antiserum was produced against synthesized peptide derived from human CREB around the phosphorylation site of Ser142. AA range:111-160
Specificity :	Phospho-CREB-1 (S142) Polyclonal Antibody detects endogenous levels of CREB-1 protein only when phosphorylated at S142.
Formulation :	Liquid in PBS containing 50% glycerol, 0.5% BSA and 0.02% sodium azide.
Source :	Rabbit
Dilution :	Western Blot: 1/500 - 1/2000. Immunohistochemistry: 1/100 - 1/300. Immunofluorescence: 1/200 - 1/1000. ELISA: 1/40000. Not yet tested in other applications.
Purification :	The antibody was affinity-purified from rabbit antiserum by affinity-chromatography using epitope-specific immunogen.
Concentration :	1 mg/ml
Storage_stability :	-20°C/1 year

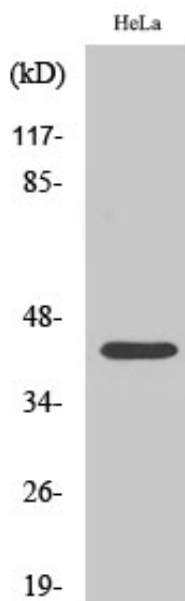


MsdS :	MSDS_Antibody.pdf
Other_name :	CREB1; Cyclic AMP-responsive element-binding protein 1; CREB-1; cAMP-responsive element-binding protein 1
Molecular Weight :	37KD

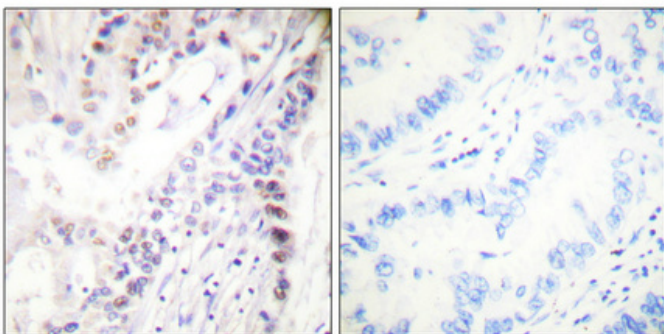
Product Images



Western blot analysis of various cells using Phospho-CREB-1 (S142) Polyclonal Antibody diluted at 1 : 500



Western blot analysis of HeLa cells using Phospho-CREB-1 (S142) Polyclonal Antibody diluted at 1 : 500



Immunohistochemical analysis of paraffin-embedded Human lung cancer. Antibody was diluted at 1:100(4°,overnight). High-pressure and temperature Tris-EDTA,pH8.0 was used for antigen retrieval. Negative contrl (right) obtaned from antibody was pre-absorbed by immunogen peptide.