

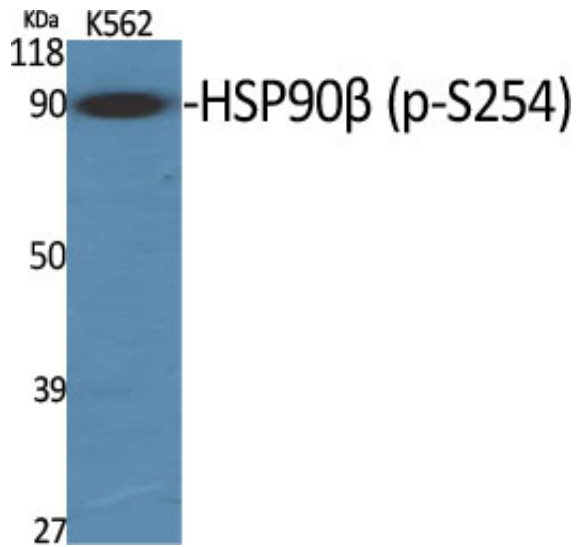
HSP90 β (phospho Ser254) Polyclonal Antibody

Catalog_no :	AP0857
Applications :	WB,IHC-p,IF,ELISA
Reactivity :	Human,Mouse,Rat,Monkey
Category :	抗原抗体
Size :	100 μ g/50 μ g/20 μ g
Gene_name :	HSP90AB1
Protein_name :	Heat shock protein HSP 90-beta
Humangene_id :	3326
Humanswissprot_no :	P08238
Mousegene_id :	15516
Mouseswissprot_no :	P11499
Ratgene_id :	301252
Ratswissprot_no :	P34058
Immunogen :	The antiserum was produced against synthesized peptide derived from human HSP90B around the phosphorylation site of Ser254. AA range:226-275
Specificity :	Phospho-HSP90 β (S254) Polyclonal Antibody detects endogenous levels of HSP90 β protein only when phosphorylated at S254.
Formulation :	Liquid in PBS containing 50% glycerol, 0.5% BSA and 0.02% sodium azide.
Source :	Rabbit
Dilution :	Western Blot: 1/500 - 1/2000. Immunohistochemistry: 1/100 - 1/300. Immunofluorescence: 1/200 - 1/1000. ELISA: 1/40000. Not yet tested in other applications.
Purification :	The antibody was affinity-purified from rabbit antiserum by affinity-chromatography using epitope-specific immunogen.
Concentration :	1 mg/ml
Storage_stability :	-20°C/1 year

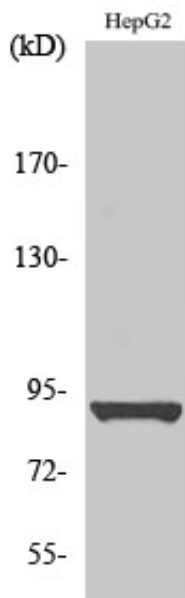


MsdS :	MSDS_Antibody.pdf
Other_name :	HSP90AB1; HSP90B; HSPC2; HSPCB; Heat shock protein HSP 90-beta; HSP 90; Heat shock 84 kDa; HSP 84; HSP84
Molecular Weight :	90KD

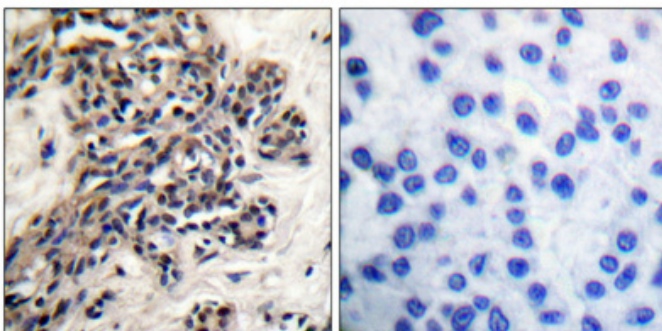
Product Images



Western Blot analysis of various cells using Phospho-HSP90 β (S254) Polyclonal Antibody



Western Blot analysis of HepG2 cells using Phospho-HSP90 β (S254) Polyclonal Antibody



Immunohistochemical analysis of paraffin-embedded Human breast cancer. Antibody was diluted at 1:100(4 $^{\circ}$, overnight). High-pressure and temperature Tris-EDTA, pH8.0 was used for antigen retrieval. Negative control (right) obtained from antibody was pre-absorbed by immunogen peptide.