

## IkB-ε (phospho Ser22) Polyclonal Antibody

Catalog_no :	AP0858
Applications :	WB,IHC-p,IF,ELISA
Reactivity :	Human,Mouse,Rat
Category :	抗原抗体
Size :	100μg/50μg/20μg
Gene_name :	NFKBIE
Protein_name :	NF-kappa-B inhibitor epsilon
Humangene_id :	<a href="#">4794</a>
Humanswissprot_no :	<a href="#">O00221</a>
Mousegene_id :	<a href="#">18037</a>
Mouseswissprot_no :	<a href="#">O54910</a>
Immunogen :	The antiserum was produced against synthesized peptide derived from human IkappaB-epsilon around the phosphorylation site of Ser22. AA range:131-180
Specificity :	Phospho-IkB-ε (S22) Polyclonal Antibody detects endogenous levels of IkB-ε protein only when phosphorylated at S22.
Formulation :	Liquid in PBS containing 50% glycerol, 0.5% BSA and 0.02% sodium azide.
Source :	Rabbit
Dilution :	Western Blot: 1/500 - 1/2000. Immunohistochemistry: 1/100 - 1/300. Immunofluorescence: 1/200 - 1/1000. ELISA: 1/40000. Not yet tested in other applications.
Purification :	The antibody was affinity-purified from rabbit antiserum by affinity-chromatography using epitope-specific immunogen.
Concentration :	1 mg/ml
Storage_stability :	-20°C/1 year
Msds :	<a href="#">MSDS_Antibody.pdf</a>
Other_name :	NFKBIE; IKBE; NF-kappa-B inhibitor epsilon; NF-kappa-BIE; I-kappa-B-epsilon; IkB-E; IkB-epsilon; IkappaBepsilon

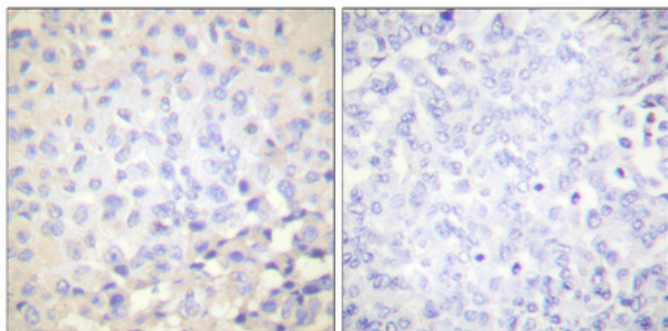


Molecular  
Weight :

38KD

---

## Product Images



Immunohistochemical analysis of paraffin-embedded Human breast cancer. Antibody was diluted at 1:100(4°,overnight). High-pressure and temperature Tris-EDTA,pH8.0 was used for antigen retrieval. Negative contrl (right) obtaned from antibody was pre-absorbed by immunogen peptide.