

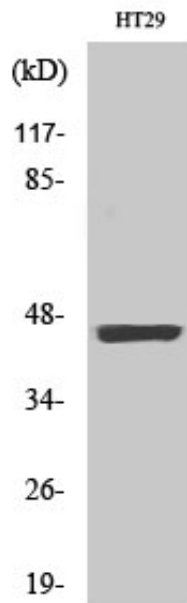
Cytokeratin 18 (phospho Ser33) Polyclonal Antibody

Catalog_no :	AP0859
Applications :	WB,IHC-p,IF,ELISA
Reactivity :	Human,Mouse,Rat
Category :	抗原抗体
Size :	100µg/50µg/20µg
Gene_name :	KRT18
Protein_name :	Keratin type I cytoskeletal 18
Humangene_id :	3875
Humanswissprot_no :	P05783
Mousegene_id :	16668
Mouseswissprot_no :	P05784
Ratgene_id :	294853
Ratswissprot_no :	Q5BJY9
Immunogen :	The antiserum was produced against synthesized peptide derived from human Keratin 18 around the phosphorylation site of Ser33. AA range:1-50
Specificity :	Phospho-Cytokeratin 18 (S33) Polyclonal Antibody detects endogenous levels of Cytokeratin 18 protein only when phosphorylated at S33.
Formulation :	Liquid in PBS containing 50% glycerol, 0.5% BSA and 0.02% sodium azide.
Source :	Rabbit
Dilution :	Western Blot: 1/500 - 1/2000. Immunohistochemistry: 1/100 - 1/300. Immunofluorescence: 1/200 - 1/1000. ELISA: 1/5000. Not yet tested in other applications.
Purification :	The antibody was affinity-purified from rabbit antiserum by affinity-chromatography using epitope-specific immunogen.
Concentration :	1 mg/ml
Storage_stability :	-20°C/1 year

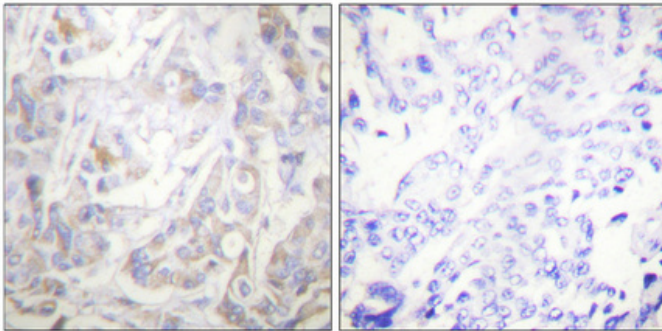


MsdS :	MSDS_Antibody.pdf
Other_name :	KRT18; CYK18; PIG46; Keratin; type I cytoskeletal 18; Cell proliferation-inducing gene 46 protein; Cytokeratin-18; CK-18; Keratin-18; K18
Molecular Weight :	47KD

Product Images



Western Blot analysis of various cells using Phospho-Cytokeratin 18 (S33) Polyclonal Antibody diluted at 1 : 2000



Immunohistochemical analysis of paraffin-embedded Human breast cancer. Antibody was diluted at 1:100(4°,overnight). High-pressure and temperature Tris-EDTA,pH8.0 was used for antigen retrieval. Negative contrl (right) obtaned from antibody was pre-absorbed by immunogen peptide.