

MEF-2 (phospho Ser408) Polyclonal Antibody

Catalog_no :	AP0860
Applications :	WB,IHC-p,IF,ELISA
Reactivity :	Human,Mouse,Rat
Category :	抗原抗体
Size :	100µg/50µg/20µg
Gene_name :	MEF2A
Protein_name :	Myocyte-specific enhancer factor 2A
Humangene_id	4205
:	
Humanswissprot	Q02078
_no :	
Mousegene_id :	17258
Mouseswissprot	Q60929
_no :	
Ratgene_id :	309957
Ratswissprot_no	Q2MJT0
:	
Immunogen :	The antiserum was produced against synthesized peptide derived from human MEF2A around the phosphorylation site of Ser408. AA range:374-423
Specificity :	Phospho-MEF-2 (S408) Polyclonal Antibody detects endogenous levels of MEF-2 protein only when phosphorylated at S408.
Formulation :	Liquid in PBS containing 50% glycerol, 0.5% BSA and 0.02% sodium azide.
Source :	Rabbit
Dilution :	Western Blot: 1/500 - 1/2000. Immunohistochemistry: 1/100 - 1/300. Immunofluorescence: 1/200 - 1/1000. ELISA: 1/40000. Not yet tested in other applications.
Purification :	The antibody was affinity-purified from rabbit antiserum by affinity-chromatography using epitope-specific immunogen.
Concentration :	1 mg/ml
Storage_stability	-20°C/1 year
:	

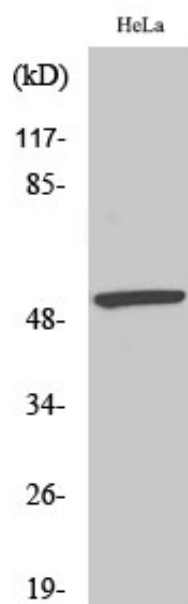


Msd : MSDS_Antibody.pdf

Other_name : MEF2A; MEF2; Myocyte-specific enhancer factor 2A; Serum response factor-like protein 1

Molecular Weight : 55KD

Product Images



Western Blot analysis of various cells using Phospho-MEF-2 (S408) Polyclonal Antibody cells nucleus extracted by Minute TM Cytoplasmic and Nuclear Fractionation kit (SC-003, Invent biotech, MN, USA).