

c-Myc (phospho Ser62) Polyclonal Antibody

Catalog_no :	AP0861
Applications :	WB,IHC-p,IF,ELISA
Reactivity :	Human,Mouse,Rat
Category :	抗原抗体
Size :	100µg/50µg/20µg
Gene_name :	MYC
Protein_name :	Myc proto-oncogene protein
Humangene_id	4609
:	
Humanswissprot	P01106
_no :	
Mousegene_id :	17869
Mouseswissprot	P01108
_no :	
Ratgene_id :	24577
Ratswissprot_no	P09416
:	
Immunogen :	The antiserum was produced against synthesized peptide derived from human Myc around the phosphorylation site of Ser62. AA range:31-80
Specificity :	Phospho-c-Myc (S62) Polyclonal Antibody detects endogenous levels of c-Myc protein only when phosphorylated at S62.
Formulation :	Liquid in PBS containing 50% glycerol, 0.5% BSA and 0.02% sodium azide.
Source :	Rabbit
Dilution :	Western Blot: 1/500 - 1/2000. Immunohistochemistry: 1/100 - 1/300. Immunofluorescence: 1/200 - 1/1000. ELISA: 1/40000. Not yet tested in other applications.
Purification :	The antibody was affinity-purified from rabbit antiserum by affinity-chromatography using epitope-specific immunogen.
Concentration :	1 mg/ml
Storage_stability	-20°C/1 year
:	

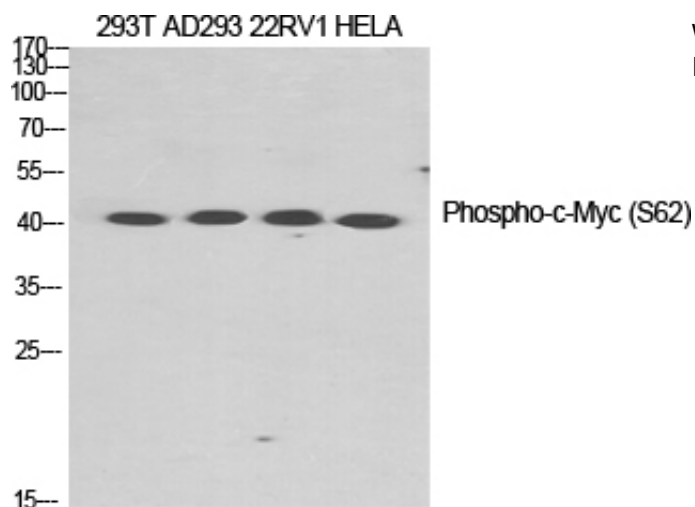


MsdS : MSDS_Antibody.pdf

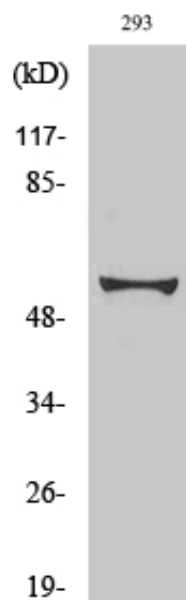
Other_name : MYC; BHLHE39; Myc proto-oncogene protein; Class E basic helix-loop-helix protein 39; bHLHe39; Proto-oncogene c-Myc; Transcription factor p64

Molecular Weight : 50,(also ~60KD in some samples)

Product Images



Western Blot analysis of various cells using Phospho-c-Myc (S62) Polyclonal Antibody diluted at 1 : 1000



Western Blot analysis of 293 cells using Phospho-c-Myc (S62) Polyclonal Antibody diluted at 1 : 1000