

IGF-IR (phospho Tyr1161) Polyclonal Antibody

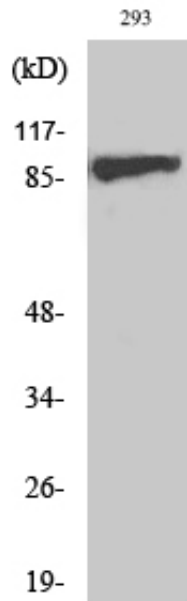
Catalog_no :	AP0866
Applications :	WB,IHC-p,IF,ELISA
Reactivity :	Human,Mouse,Rat
Category :	抗原抗体
Size :	100µg/50µg/20µg
Gene_name :	IGF1R
Protein_name :	Insulin-like growth factor 1 receptor
Humangene_id :	3480
Humanswissprot_no :	P08069/P06213
Mousegene_id :	16001/16337
Ratgene_id :	25718
Ratswissprot_no :	P24062/P15127
Immunogen :	Synthesized phospho-peptide around the phosphorylation site of human IGF-IR (phospho Tyr1161)
Specificity :	Phospho-IGF-IR (Y1161) Polyclonal Antibody detects endogenous levels of IGF-IR protein only when phosphorylated at Y1161.
Formulation :	Liquid in PBS containing 50% glycerol, 0.5% BSA and 0.02% sodium azide.
Source :	Rabbit
Dilution :	Western Blot: 1/500 - 1/2000. Immunohistochemistry: 1/100 - 1/300. Immunofluorescence: 1/200 - 1/1000. ELISA: 1/40000. Not yet tested in other applications.
Purification :	The antibody was affinity-purified from rabbit antiserum by affinity-chromatography using epitope-specific immunogen.
Concentration :	1 mg/ml
Storage_stability :	-20°C/1 year
Msds :	MSDS_Antibody.pdf



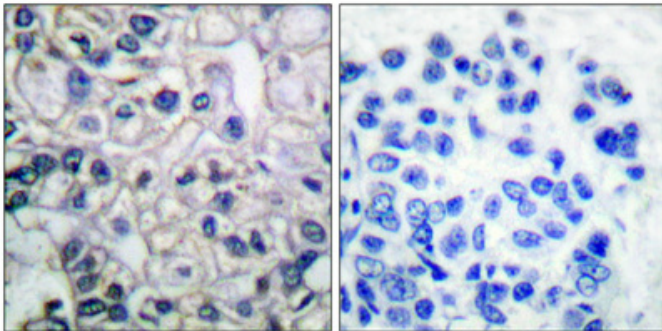
Other_name : IGF1R; Insulin-like growth factor 1 receptor; Insulin-like growth factor I receptor; IGF-I receptor; CD antigen CD221; INSR; Insulin receptor; IR; CD antigen CD220

Molecular Weight : 95KD

Product Images



Western Blot analysis of various cells using Phospho-IGF-IR (Y1161) Polyclonal Antibody diluted at 1 : 500



Immunohistochemical analysis of paraffin-embedded Human breast cancer. Antibody was diluted at 1:100(4°, overnight). High-pressure and temperature Tris-EDTA, pH8.0 was used for antigen retrieval. Negative control (right) obtained from antibody was pre-absorbed by immunogen peptide.