

## Cot (phospho Thr290) Polyclonal Antibody

Catalog_no :	AP0867
Applications :	WB,IHC-p,IF,ELISA
Reactivity :	Human,Mouse,Rat
Category :	抗原抗体
Size :	100µg/50µg/20µg
Gene_name :	MAP3K8
Protein_name :	Mitogen-activated protein kinase kinase kinase 8
Humangene_id	<a href="#">1326</a>
:	
Humanswissprot	<a href="#">P41279</a>
_no :	
Mousegene_id :	<a href="#">26410</a>
Mouseswissprot	<a href="#">Q07174</a>
_no :	
Ratgene_id :	<a href="#">116596</a>
Ratswissprot_no	<a href="#">Q63562</a>
:	
Immunogen :	The antiserum was produced against synthesized peptide derived from human COT around the phosphorylation site of Thr290. AA range:256-305
Specificity :	Phospho-Cot (T290) Polyclonal Antibody detects endogenous levels of Cot protein only when phosphorylated at T290.
Formulation :	Liquid in PBS containing 50% glycerol, 0.5% BSA and 0.02% sodium azide.
Source :	Rabbit
Dilution :	Western Blot: 1/500 - 1/2000. Immunohistochemistry: 1/100 - 1/300. Immunofluorescence: 1/200 - 1/1000. ELISA: 1/40000. Not yet tested in other applications.
Purification :	The antibody was affinity-purified from rabbit antiserum by affinity-chromatography using epitope-specific immunogen.
Concentration :	1 mg/ml
Storage_stability	-20°C/1 year
:	

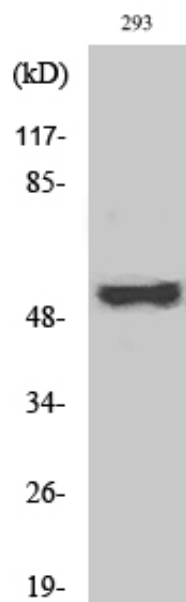


Msd : [MSDS\\_Antibody.pdf](#)

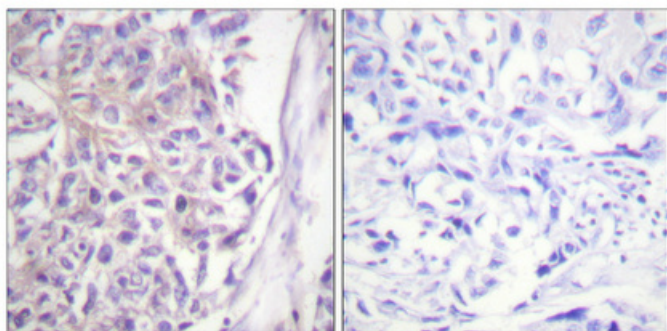
Other\_name : MAP3K8; COT; ESTF; Mitogen-activated protein kinase kinase kinase 8; Cancer Osaka thyroid oncogene; Proto-oncogene c-Cot; Serine/threonine-protein kinase cot; Tumor progression locus 2; TPL-2

Molecular Weight : 60KD

## Product Images



Western Blot analysis of various cells using Phospho-Cot (T290) Polyclonal Antibody



Immunohistochemical analysis of paraffin-embedded Human breast cancer. Antibody was diluted at 1:100(4°, overnight). High-pressure and temperature Tris-EDTA, pH8.0 was used for antigen retrieval. Negative control (right) obtained from antibody was pre-absorbed by immunogen peptide.