

cPLA2 (phospho Ser505) Polyclonal Antibody

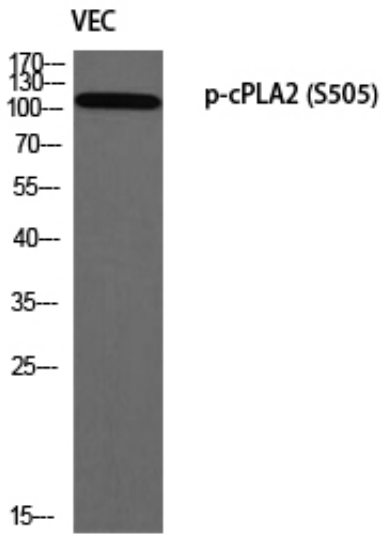
Catalog_no :	AP0868
Applications :	WB,IHC-p,IF,ELISA
Reactivity :	Human,Mouse,Rat
Category :	抗原抗体
Size :	100µg/50µg/20µg
Gene_name :	PLA2G4A
Protein_name :	Cytosolic phospholipase A2
Humangene_id	5321
:	
Humanswissprot	P47712
_no :	
Mousegene_id :	18783
Mouseswissprot	P47713
_no :	
Ratswissprot_no	P50393
:	
Immunogen :	The antiserum was produced against synthesized peptide derived from human c-PLA2 around the phosphorylation site of Ser505. AA range:471-520
Specificity :	Phospho-cPLA2 (S505) Polyclonal Antibody detects endogenous levels of cPLA2 protein only when phosphorylated at S505.
Formulation :	Liquid in PBS containing 50% glycerol, 0.5% BSA and 0.02% sodium azide.
Source :	Rabbit
Dilution :	Western Blot: 1/500 - 1/2000. Immunohistochemistry: 1/100 - 1/300. Immunofluorescence: 1/200 - 1/1000. ELISA: 1/10000. Not yet tested in other applications.
Purification :	The antibody was affinity-purified from rabbit antiserum by affinity-chromatography using epitope-specific immunogen.
Concentration :	1 mg/ml
Storage_stability	-20°C/1 year
:	
Msds :	MSDS_Antibody.pdf



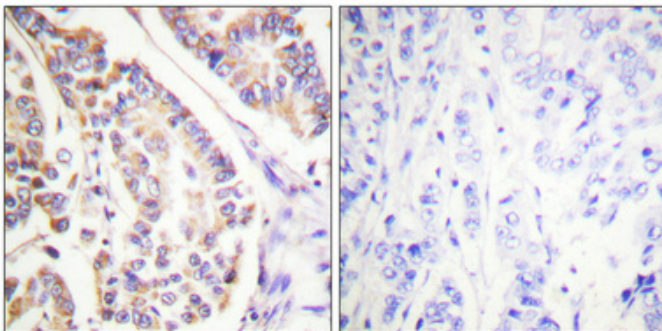
Other_name : PLA2G4A; CPLA2; PLA2G4; Cytosolic phospholipase A2; cPLA2; Phospholipase A2 group IVA

Molecular Weight : 110KD

Product Images



Western blot analysis of VEC using p-cPLA2 (S505) antibody. Antibody was diluted at 1:1000



Immunohistochemical analysis of paraffin-embedded Human breast cancer. Antibody was diluted at 1:100(4°, overnight). High-pressure and temperature Tris-EDTA, pH8.0 was used for antigen retrieval. Negative control (right) obtained from antibody was pre-absorbed by immunogen peptide.