

EF-2 (phospho Thr56) Polyclonal Antibody

Catalog_no :	AP0870
Applications :	WB,IHC-p,IF,ELISA
Reactivity :	Human,Mouse,Rat
Category :	抗原抗体
Size :	100µg/50µg/20µg
Gene_name :	EEF2
Protein_name :	Elongation factor 2
Humangene_id	1938
:	
Humanswissprot	P13639
_no :	
Mousegene_id :	13629
Mouseswissprot	P58252
_no :	
Ratgene_id :	29565
Ratswissprot_no	P05197
:	
Immunogen :	The antiserum was produced against synthesized peptide derived from human eEF2 around the phosphorylation site of Thr56. AA range:31-80
Specificity :	Phospho-EF-2 (T56) Polyclonal Antibody detects endogenous levels of EF-2 protein only when phosphorylated at T56.
Formulation :	Liquid in PBS containing 50% glycerol, 0.5% BSA and 0.02% sodium azide.
Source :	Rabbit
Dilution :	Western Blot: 1/500 - 1/2000. Immunohistochemistry: 1/100 - 1/300. Immunofluorescence: 1/200 - 1/1000. ELISA: 1/10000. Not yet tested in other applications.
Purification :	The antibody was affinity-purified from rabbit antiserum by affinity-chromatography using epitope-specific immunogen.
Concentration :	1 mg/ml
Storage_stability	-20°C/1 year
:	

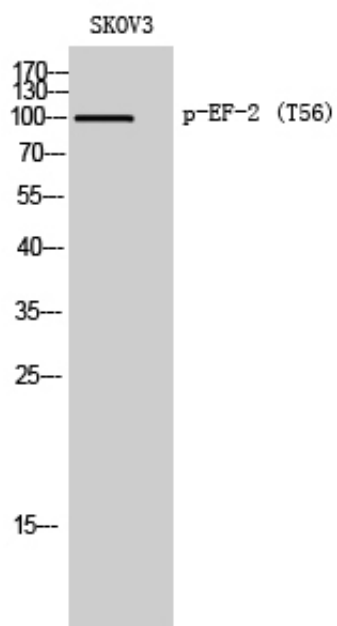


Msd : MSDS_Antibody.pdf

Other_name : EEF2; EF2; Elongation factor 2; EF-2

Molecular Weight : 100KD

Product Images



Western Blot analysis of SKOV3 cells using Phospho-EF-2 (T56) Polyclonal Antibody diluted at 1 : 2000