

Rpb1 (phospho Ser1619) Polyclonal Antibody

Catalog_no :	AP0871
Applications :	WB,IHC-p,IF,ELISA
Reactivity :	Human,Mouse,Rat,Monkey
Category :	抗原抗体
Size :	100µg/50µg/20µg
Gene_name :	POLR2A
Protein_name :	DNA-directed RNA polymerase II subunit RPB1
Humangene_id :	5430
Humanswissprot_no :	P24928
Mousegene_id :	20020
Mouseswissprot_no :	P08775
Immunogen :	The antiserum was produced against synthesized peptide derived from human POLR2A around the phosphorylation site of Ser1619. AA range:1585-1634
Specificity :	Phospho-Rpb1 (S1619) Polyclonal Antibody detects endogenous levels of Rpb1 protein only when phosphorylated at S1619.
Formulation :	Liquid in PBS containing 50% glycerol, 0.5% BSA and 0.02% sodium azide.
Source :	Rabbit
Dilution :	Western Blot: 1/500 - 1/2000. Immunohistochemistry: 1/100 - 1/300. Immunofluorescence: 1/200 - 1/1000. ELISA: 1/10000. Not yet tested in other applications.
Purification :	The antibody was affinity-purified from rabbit antiserum by affinity-chromatography using epitope-specific immunogen.
Concentration :	1 mg/ml
Storage_stability :	-20°C/1 year
Msds :	MSDS_Antibody.pdf
Other_name :	POLR2A; POLR2; DNA-directed RNA polymerase II subunit RPB1; RNA polymerase II subunit B1; DNA-directed RNA polymerase II subunit A; DNA-directed RNA polymerase

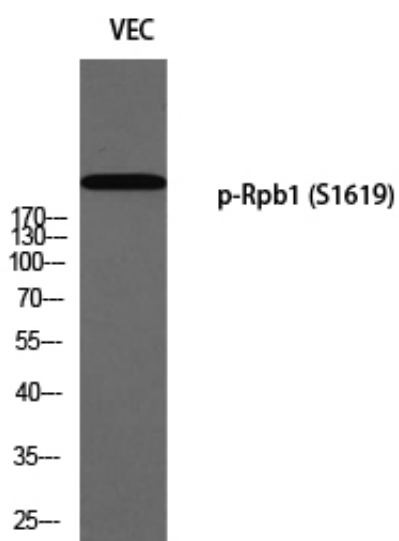


III largest subunit; RNA-directed RNA polymerase II subunit RPB1

Molecular
Weight :

250KD

Product Images



Western blot analysis of VEC using p-Rpb1 (S1619) antibody. Antibody was diluted at 1:2000 cells nucleus extracted by Minute TM Cytoplasmic and Nuclear Fractionation kit (SC-003, Invent biotech, MN, USA).