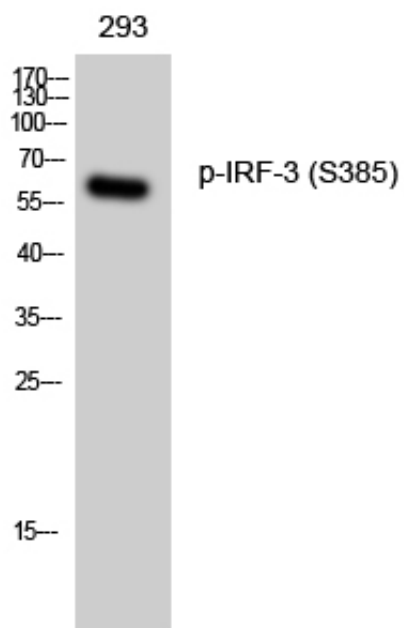


IRF-3 (phospho Ser385) Polyclonal Antibody

Catalog_no :	AP0880
Applications :	WB,IHC-p,IF,ELISA
Reactivity :	Human
Category :	抗原抗体
Size :	100µg/50µg/20µg
Gene_name :	IRF3
Protein_name :	Interferon regulatory factor 3
Humangene_id :	3661
Humanswissprot_no :	Q14653
Immunogen :	The antiserum was produced against synthesized peptide derived from human IRF-3 around the phosphorylation site of Ser385. AA range:351-400
Specificity :	Phospho-IRF-3 (S385) Polyclonal Antibody detects endogenous levels of IRF-3 protein only when phosphorylated at S385.
Formulation :	Liquid in PBS containing 50% glycerol, 0.5% BSA and 0.02% sodium azide.
Source :	Rabbit
Dilution :	Western Blot: 1/500 - 1/2000. Immunohistochemistry: 1/100 - 1/300. Immunofluorescence: 1/200 - 1/1000. ELISA: 1/10000. Not yet tested in other applications.
Purification :	The antibody was affinity-purified from rabbit antiserum by affinity-chromatography using epitope-specific immunogen.
Concentration :	1 mg/ml
Storage_stability :	-20°C/1 year
Msds :	MSDS_Antibody.pdf
Other_name :	IRF3; Interferon regulatory factor 3; IRF-3
Molecular Weight :	57KD

Product Images



Western Blot analysis of 293 cells using Phospho-IRF-3 (S385) Polyclonal Antibody