

Splicing factor 1 (phospho Ser82) Polyclonal Antibody

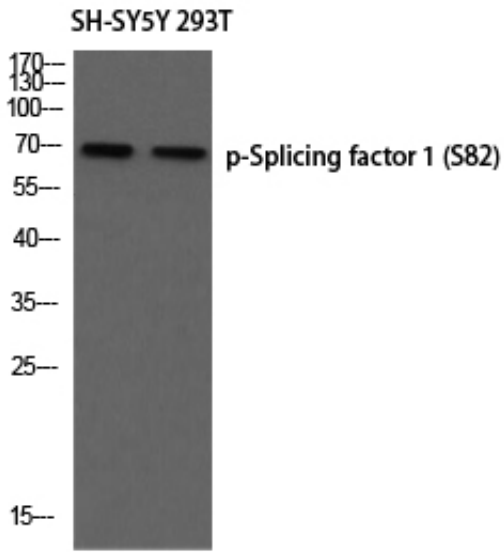
Catalog_no :	AP0894
Applications :	WB,IHC-p,IF,ELISA
Reactivity :	Human,Mouse,Monkey
Category :	抗原抗体
Size :	100µg/50µg/20µg
Gene_name :	SF1
Protein_name :	Splicing factor 1
Humangene_id :	7536
Humanswissprot_no :	Q15637
Mouseswissprot_no :	Q64213
Immunogen :	The antiserum was produced against synthesized peptide derived from human SF1 around the phosphorylation site of Ser82. AA range:48-97
Specificity :	Phospho-Splicing factor 1 (S82) Polyclonal Antibody detects endogenous levels of Splicing factor 1 protein only when phosphorylated at S82.
Formulation :	Liquid in PBS containing 50% glycerol, 0.5% BSA and 0.02% sodium azide.
Source :	Rabbit
Dilution :	Western Blot: 1/500 - 1/2000. Immunohistochemistry: 1/100 - 1/300. Immunofluorescence: 1/200 - 1/1000. ELISA: 1/5000. Not yet tested in other applications.
Purification :	The antibody was affinity-purified from rabbit antiserum by affinity-chromatography using epitope-specific immunogen.
Concentration :	1 mg/ml
Storage_stability :	-20°C/1 year
Msds :	MSDS_Antibody.pdf
Other_name :	SF1; ZFM1; ZNF162; Splicing factor 1; Mammalian branch point-binding protein; BBP; mBBP; Transcription factor ZFM1; Zinc finger gene in MEN1 locus; Zinc finger protein 162



Molecular
Weight :

68KD

Product Images



Western blot analysis of SH-SY5Y 293T using p-Splicing factor 1 (S82) antibody. Antibody was diluted at 1:500