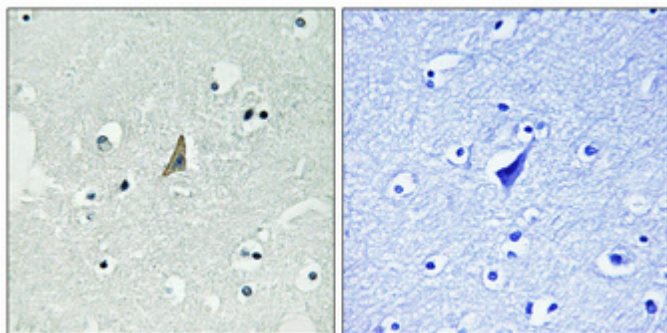


## ALK (phospho Tyr1604) Polyclonal Antibody

Catalog_no :	AP0898
Applications :	WB,IHC-p,IF,ELISA
Reactivity :	Human
Category :	抗原抗体
Size :	100µg/50µg/20µg
Gene_name :	ALK
Protein_name :	ALK tyrosine kinase receptor
Humangene_id :	<a href="#">238</a>
Humanswissprot_no :	<a href="#">Q9UM73</a>
Immunogen :	The antiserum was produced against synthesized peptide derived from human ALK around the phosphorylation site of Tyr1604. AA range:1570-1619
Specificity :	Phospho-ALK (Y1604) Polyclonal Antibody detects endogenous levels of ALK protein only when phosphorylated at Y1604.
Formulation :	Liquid in PBS containing 50% glycerol, 0.5% BSA and 0.02% sodium azide.
Source :	Rabbit
Dilution :	Western Blot: 1/500 - 1/2000. Immunohistochemistry: 1/100 - 1/300. Immunofluorescence: 1/200 - 1/1000. ELISA: 1/5000. Not yet tested in other applications.
Purification :	The antibody was affinity-purified from rabbit antiserum by affinity-chromatography using epitope-specific immunogen.
Concentration :	1 mg/ml
Storage_stability :	-20°C/1 year
Msds :	<a href="#">MSDS_Antibody.pdf</a>
Other_name :	ALK; ALK tyrosine kinase receptor; Anaplastic lymphoma kinase; CD antigen CD246
Molecular Weight :	176KD

## Product Images



Immunohistochemical analysis of paraffin-embedded Human brain. Antibody was diluted at 1:100(4°,overnight). High-pressure and temperature Tris-EDTA,pH8.0 was used for antigen retrieval. Negative contrl (right) obtaned from antibody was pre-absorbed by immunogen peptide.