

14-3-3 θ/τ (phospho Ser232) Polyclonal Antibody

Catalog_no :	AP0903
Applications :	WB,IHC-p,IF,ELISA
Reactivity :	Human,Mouse,Rat
Category :	抗原抗体
Size :	100 μ g/50 μ g/20 μ g
Gene_name :	YWHAQ
Protein_name :	14-3-3 protein theta
Humangene_id :	5350
Humanswissprot_no :	P27348
Mousegene_id :	22630
Mouseswissprot_no :	P68254
Ratgene_id :	25577
Ratswissprot_no :	P68255
Immunogen :	The antiserum was produced against synthesized peptide derived from human 14-3-3 thet/tau around the phosphorylation site of Ser232. AA range:196-245
Specificity :	Phospho-14-3-3 θ/τ (S232) Polyclonal Antibody detects endogenous levels of 14-3-3 θ/τ protein only when phosphorylated at S232.
Formulation :	Liquid in PBS containing 50% glycerol, 0.5% BSA and 0.02% sodium azide.
Source :	Rabbit
Dilution :	Western Blot: 1/500 - 1/2000. Immunohistochemistry: 1/100 - 1/300. Immunofluorescence: 1/200 - 1/1000. ELISA: 1/5000. Not yet tested in other applications.
Purification :	The antibody was affinity-purified from rabbit antiserum by affinity-chromatography using epitope-specific immunogen.
Concentration :	1 mg/ml
Storage_stability :	-20°C/1 year

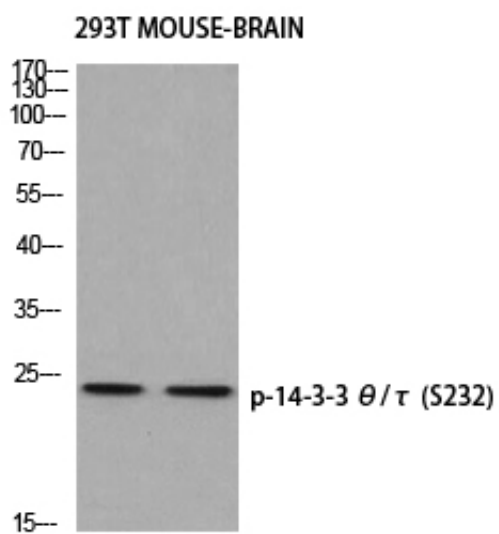


Msd : MSDS_Antibody.pdf

Other_name : YWHAQ; 14-3-3 protein theta; 14-3-3 protein T-cell; 14-3-3 protein tau; Protein HS1

Molecular Weight : 28KD

Product Images



Western blot analysis of 293T MOUSE-BRAIN using p-14-3-3 θ/τ (S232) antibody. Antibody was diluted at 1:500