

DNAM-1 (phospho Ser329) Polyclonal Antibody

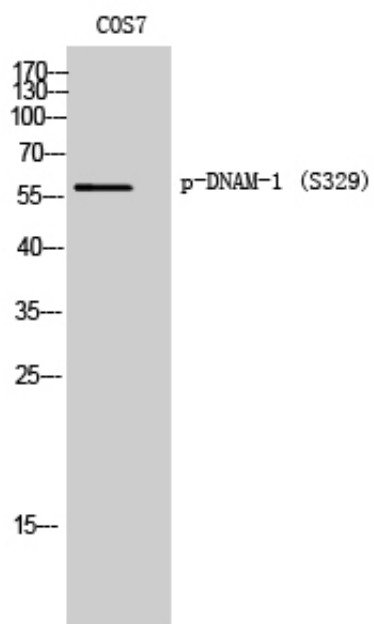
Catalog_no :	AP0914
Applications :	WB,IHC-p,IF,ELISA
Reactivity :	Human,Mouse,Monkey
Category :	抗原抗体
Size :	100µg/50µg/20µg
Gene_name :	CD226
Protein_name :	CD226 antigen
Humangene_id :	10666
Humanswissprot_no :	Q15762
Mousegene_id :	225825
Mouseswissprot_no :	Q8K4F0
Immunogen :	The antiserum was produced against synthesized peptide derived from human CD226/DNAM-1 around the phosphorylation site of Ser329. AA range:287-336
Specificity :	Phospho-DNAM-1 (S329) Polyclonal Antibody detects endogenous levels of DNAM-1 protein only when phosphorylated at S329.
Formulation :	Liquid in PBS containing 50% glycerol, 0.5% BSA and 0.02% sodium azide.
Source :	Rabbit
Dilution :	Western Blot: 1/500 - 1/2000. Immunohistochemistry: 1/100 - 1/300. Immunofluorescence: 1/200 - 1/1000. ELISA: 1/40000. Not yet tested in other applications.
Purification :	The antibody was affinity-purified from rabbit antiserum by affinity-chromatography using epitope-specific immunogen.
Concentration :	1 mg/ml
Storage_stability :	-20°C/1 year
Msds :	MSDS_Antibody.pdf
Other_name :	CD226; DNAM1; CD226 antigen; DNAX accessory molecule 1; DNAM-1; CD antigen CD226



Molecular
Weight :

60KD

Product Images



Western Blot analysis of COS7 cells using Phospho-DNAM-1 (S329) Polyclonal Antibody