

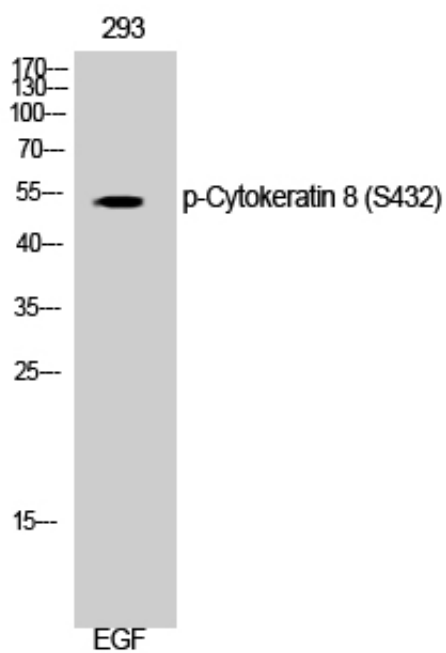
Cytokeratin 8 (phospho Ser432) Polyclonal Antibody

Catalog_no :	AP0918
Applications :	WB,IHC-p,IF,ELISA
Reactivity :	Human,Mouse,Rat
Category :	抗原抗体
Size :	100µg/50µg/20µg
Gene_name :	KRT8
Protein_name :	Keratin type II cytoskeletal 8
Humangene_id :	3856
Humanswissprot_no :	P05787
Mousegene_id :	16691
Mouseswissprot_no :	P11679
Ratgene_id :	25626
Ratswissprot_no :	Q10758
Immunogen :	The antiserum was produced against synthesized peptide derived from human Keratin 8 around the phosphorylation site of Ser432. AA range:401-450
Specificity :	Phospho-Cytokeratin 8 (S432) Polyclonal Antibody detects endogenous levels of Cytokeratin 8 protein only when phosphorylated at S432.
Formulation :	Liquid in PBS containing 50% glycerol, 0.5% BSA and 0.02% sodium azide.
Source :	Rabbit
Dilution :	Western Blot: 1/500 - 1/2000. Immunohistochemistry: 1/100 - 1/300. Immunofluorescence: 1/200 - 1/1000. ELISA: 1/40000. Not yet tested in other applications.
Purification :	The antibody was affinity-purified from rabbit antiserum by affinity-chromatography using epitope-specific immunogen.
Concentration :	1 mg/ml
Storage_stability :	-20°C/1 year



MsdS :	MSDS_Antibody.pdf
Other_name :	KRT8; CYK8; Keratin; type II cytoskeletal 8; Cytokeratin-8; CK-8; Keratin-8; K8; Type-II keratin Kb8
Molecular Weight :	53KD

Product Images



Western Blot analysis of 293 cells using Phospho-Cytokeratin 8 (S432) Polyclonal Antibody diluted at 1 : 1000