

p120 (phospho Tyr228) Polyclonal Antibody

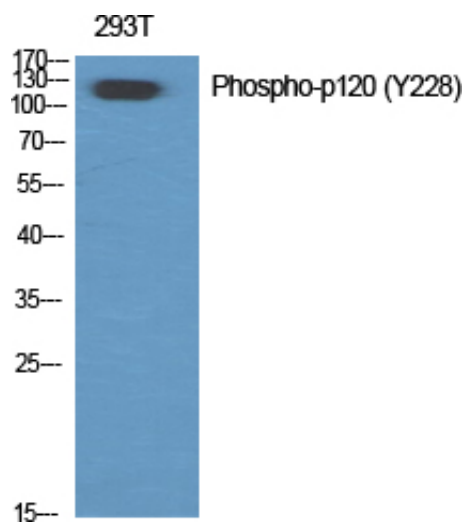
Catalog_no :	AP0919
Applications :	WB,IHC-p,IF,ELISA
Reactivity :	Human,Mouse,Rat
Category :	抗原抗体
Size :	100µg/50µg/20µg
Gene_name :	CTNND1
Protein_name :	Catenin delta-1
Humangene_id :	1500
Humanswissprot_no :	O60716
Mousegene_id :	12388
Mouseswissprot_no :	P30999
Immunogen :	The antiserum was produced against synthesized peptide derived from human Catenin-delta1 around the phosphorylation site of Tyr228. AA range:201-250
Specificity :	Phospho-p120 (Y228) Polyclonal Antibody detects endogenous levels of p120 protein only when phosphorylated at Y228.
Formulation :	Liquid in PBS containing 50% glycerol, 0.5% BSA and 0.02% sodium azide.
Source :	Rabbit
Dilution :	Western Blot: 1/500 - 1/2000. Immunohistochemistry: 1/100 - 1/300. Immunofluorescence: 1/200 - 1/1000. ELISA: 1/10000. Not yet tested in other applications.
Purification :	The antibody was affinity-purified from rabbit antiserum by affinity-chromatography using epitope-specific immunogen.
Concentration :	1 mg/ml
Storage_stability :	-20°C/1 year
Msds :	MSDS_Antibody.pdf
Other_name :	CTNND1; KIAA0384; Catenin delta-1; Cadherin-associated Src substrate; CAS; p120 catenin; p120(ctn); p120(cas)



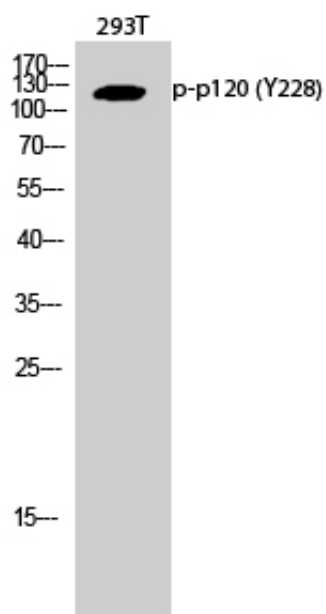
Molecular
Weight :

108KD

Product Images



Western Blot analysis of various cells using Phospho-p120 (Y228) Polyclonal Antibody diluted at 1 : 500



Western Blot analysis of 293T cells using Phospho-p120 (Y228) Polyclonal Antibody diluted at 1 : 500