



HDAC6 (phospho Ser22) Polyclonal Antibody

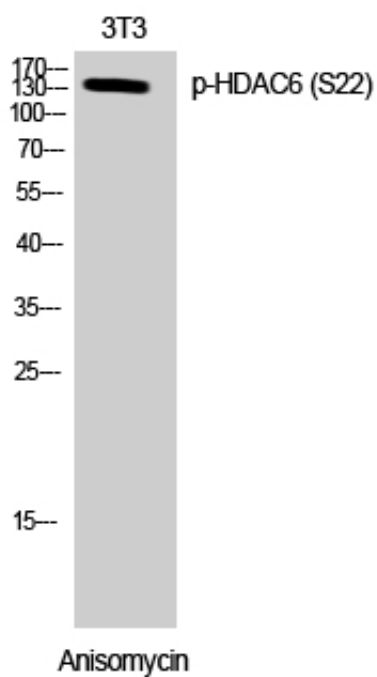
Catalog_no :	AP0922
Applications :	WB,IHC-p,IF,ELISA
Reactivity :	Human,Mouse
Category :	抗原抗体
Size :	100µg/50µg/20µg
Gene_name :	HDAC6
Protein_name :	Histone deacetylase 6
Humangene_id :	10013
Humanswissprot_no :	Q9UBN7
Mousegene_id :	15185
Mouseswissprot_no :	Q9Z2V5
Immunogen :	The antiserum was produced against synthesized peptide derived from human HDAC6 around the phosphorylation site of Ser22. AA range:7-56
Specificity :	Phospho-HDAC6 (S22) Polyclonal Antibody detects endogenous levels of HDAC6 protein only when phosphorylated at S22.
Formulation :	Liquid in PBS containing 50% glycerol, 0.5% BSA and 0.02% sodium azide.
Source :	Rabbit
Dilution :	Western Blot: 1/500 - 1/2000. Immunohistochemistry: 1/100 - 1/300. Immunofluorescence: 1/200 - 1/1000. ELISA: 1/10000. Not yet tested in other applications.
Purification :	The antibody was affinity-purified from rabbit antiserum by affinity-chromatography using epitope-specific immunogen.
Concentration :	1 mg/ml
Storage_stability :	-20°C/1 year
Msds :	MSDS_Antibody.pdf
Other_name :	HDAC6; KIAA0901; JM21; Histone deacetylase 6; HD6



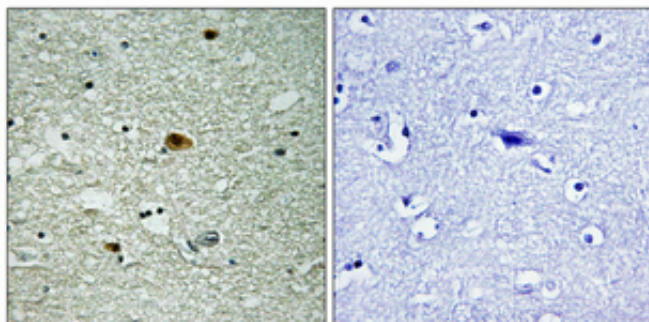
Molecular
Weight :

131KD

Product Images



Western Blot analysis of 3T3 cells using Phospho-HDAC6 (S22) Polyclonal Antibody diluted at 1 : 500



Immunohistochemical analysis of paraffin-embedded Human brain. Antibody was diluted at 1:100(4°, overnight). High-pressure and temperature Tris-EDTA, pH8.0 was used for antigen retrieval. Negative control (right) obtained from antibody was pre-absorbed by immunogen peptide.