

DREAM (phospho Ser63) Polyclonal Antibody

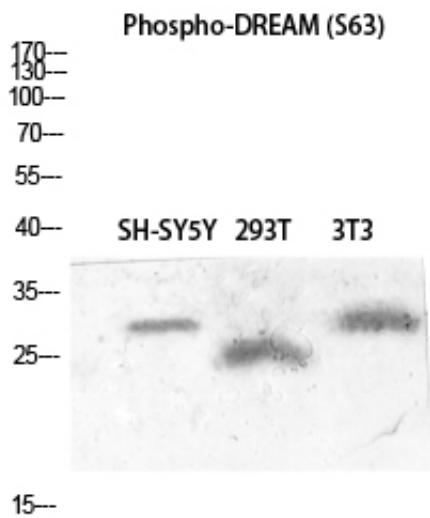
Catalog_no :	AP0930
Applications :	WB,IHC-p,IF,ELISA
Reactivity :	Human,Mouse
Category :	抗原抗体
Size :	100µg/50µg/20µg
Gene_name :	KCNIP3
Protein_name :	Calsenilin
Humangene_id :	30818
Humanswissprot_no :	Q9Y2W7
Mousegene_id :	56461
Mouseswissprot_no :	Q9QXT8
Immunogen :	The antiserum was produced against synthesized peptide derived from human Calsenilin/KCNIP3 around the phosphorylation site of Ser63. AA range:29-78
Specificity :	Phospho-DREAM (S63) Polyclonal Antibody detects endogenous levels of DREAM protein only when phosphorylated at S63.
Formulation :	Liquid in PBS containing 50% glycerol, 0.5% BSA and 0.02% sodium azide.
Source :	Rabbit
Dilution :	Western Blot: 1/500 - 1/2000. Immunohistochemistry: 1/100 - 1/300. Immunofluorescence: 1/200 - 1/1000. ELISA: 1/20000. Not yet tested in other applications.
Purification :	The antibody was affinity-purified from rabbit antiserum by affinity-chromatography using epitope-specific immunogen.
Concentration :	1 mg/ml
Storage_stability :	-20°C/1 year
Msds :	MSDS_Antibody.pdf
Other_name :	KCNIP3; CSEN; DREAM; KCHIP3; Calsenilin; A-type potassium channel modulatory protein 3; DRE-antagonist modulator; DREAM; Kv channel-interacting protein 3; KCHIP3



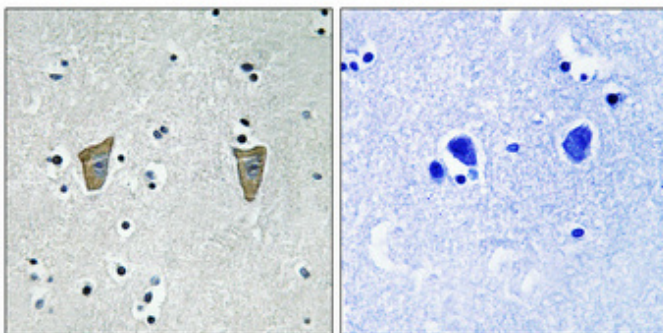
Molecular
Weight :

29KD

Product Images



Western blot analysis of SH-SY5Y 293T 3T3 lysis using Phospho-DREAM (S63) antibody. Antibody was diluted at 1:500



Immunohistochemical analysis of paraffin-embedded Human brain. Antibody was diluted at 1:100(4°, overnight). High-pressure and temperature Tris-EDTA, pH8.0 was used for antigen retrieval. Negative control (right) obtained from antibody was pre-absorbed by immunogen peptide.