

## Cdc16 (phospho Ser560) Polyclonal Antibody

Catalog_no :	AP0931
Applications :	WB,IHC-p,IF,ELISA
Reactivity :	Human,Mouse
Category :	抗原抗体
Size :	100µg/50µg/20µg
Gene_name :	CDC16
Protein_name :	Cell division cycle protein 16 homolog
Humangene_id :	<a href="#">8881</a>
Humanswissprot_no :	<a href="#">Q13042</a>
Mousegene_id :	<a href="#">69957</a>
Mouseswissprot_no :	<a href="#">Q8R349</a>
Immunogen :	The antiserum was produced against synthesized peptide derived from human CDC16/APC6 around the phosphorylation site of Ser560. AA range:526-575
Specificity :	Phospho-Cdc16 (S560) Polyclonal Antibody detects endogenous levels of Cdc16 protein only when phosphorylated at S560.
Formulation :	Liquid in PBS containing 50% glycerol, 0.5% BSA and 0.02% sodium azide.
Source :	Rabbit
Dilution :	Western Blot: 1/500 - 1/2000. Immunohistochemistry: 1/100 - 1/300. Immunofluorescence: 1/200 - 1/1000. ELISA: 1/20000. Not yet tested in other applications.
Purification :	The antibody was affinity-purified from rabbit antiserum by affinity-chromatography using epitope-specific immunogen.
Concentration :	1 mg/ml
Storage_stability :	-20°C/1 year
Msds :	<a href="#">MSDS_Antibody.pdf</a>
Other_name :	CDC16; ANAPC6; Cell division cycle protein 16 homolog; Anaphase-promoting complex subunit 6; APC6; CDC16 homolog; CDC16Hs; Cyclosome subunit 6

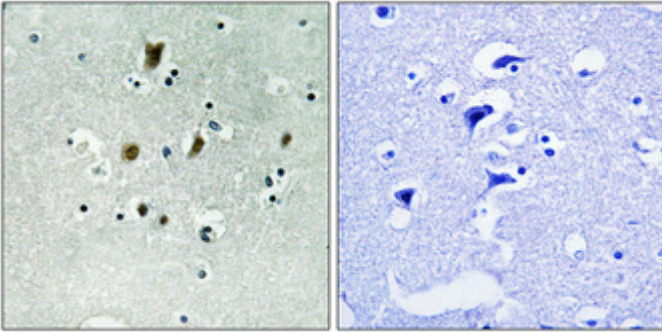


Molecular  
Weight :

72KD

---

## Product Images



Immunohistochemical analysis of paraffin-embedded Human brain. Antibody was diluted at 1:100(4°,overnight). High-pressure and temperature Tris-EDTA,pH8.0 was used for antigen retrieval. Negative contrl (right) obtaned from antibody was pre-absorbed by immunogen peptide.