

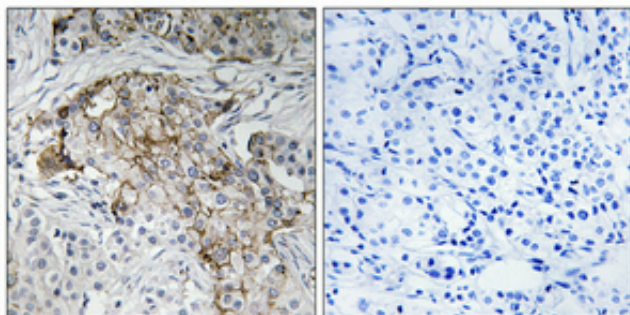
ENaC  $\beta$  (phospho Thr615) Polyclonal Antibody

Catalog_no :	AP0941
Applications :	WB,IHC-p,IF,ELISA
Reactivity :	Human,Mouse,Rat
Category :	抗原抗体
Size :	100 $\mu$ g/50 $\mu$ g/20 $\mu$ g
Gene_name :	SCNN1B
Protein_name :	Amiloride-sensitive sodium channel subunit beta
Humangene_id :	<a href="#">6338</a>
Humanswissprot_no :	<a href="#">P51168</a>
Mousegene_id :	<a href="#">20277</a>
Mouseswissprot_no :	<a href="#">Q9WU38</a>
Ratgene_id :	<a href="#">24767</a>
Ratswissprot_no :	<a href="#">P37090</a>
Immunogen :	The antiserum was produced against synthesized peptide derived from human Nonvoltage-gated Sodium Channel 1 around the phosphorylation site of Thr615. AA range:581-630
Specificity :	Phospho-ENaC $\beta$ (T615) Polyclonal Antibody detects endogenous levels of ENaC $\beta$ protein only when phosphorylated at T615.
Formulation :	Liquid in PBS containing 50% glycerol, 0.5% BSA and 0.02% sodium azide.
Source :	Rabbit
Dilution :	Western Blot: 1/500 - 1/2000. Immunohistochemistry: 1/100 - 1/300. Immunofluorescence: 1/200 - 1/1000. ELISA: 1/10000. Not yet tested in other applications.
Purification :	The antibody was affinity-purified from rabbit antiserum by affinity-chromatography using epitope-specific immunogen.
Concentration :	1 mg/ml
Storage_stability	-20°C/1 year



:	
MsdS :	<a href="#">MSDS_Antibody.pdf</a>
Other_name :	SCNN1B; Amiloride-sensitive sodium channel subunit beta; Beta-NaCH; Epithelial Na(+) channel subunit beta; Beta-ENaC; ENaCB; Nonvoltage-gated sodium channel 1 subunit beta; SCNEB
Molecular Weight :	68KD

## Product Images



Immunohistochemical analysis of paraffin-embedded Human breast cancer. Antibody was diluted at 1:100(4°,overnight). High-pressure and temperature Tris-EDTA,pH8.0 was used for antigen retrieval. Negative contrl (right) obtaned from antibody was pre-absorbed by immunogen peptide.