

CRMP-2 (phospho Thr514) Polyclonal Antibody

Catalog_no :	AP0947
Applications :	WB,IHC-p,IF,ELISA
Reactivity :	Human,Mouse,Rat
Category :	抗原抗体
Size :	100µg/50µg/20µg
Gene_name :	DPYSL2
Protein_name :	Dihydropyrimidinase-related protein 2
Humangene_id	1808
:	
Humanswissprot	Q16555
_no :	
Mousegene_id :	12934
Mouseswissprot	O08553
_no :	
Ratgene_id :	25416
Ratswissprot_no	P47942
:	
Immunogen :	The antiserum was produced against synthesized peptide derived from human DRP-2 around the phosphorylation site of Thr514. AA range:480-529
Specificity :	Phospho-CRMP-2 (T514) Polyclonal Antibody detects endogenous levels of CRMP-2 protein only when phosphorylated at T514.
Formulation :	Liquid in PBS containing 50% glycerol, 0.5% BSA and 0.02% sodium azide.
Source :	Rabbit
Dilution :	Western Blot: 1/500 - 1/2000. Immunohistochemistry: 1/100 - 1/300. Immunofluorescence: 1/200 - 1/1000. ELISA: 1/5000. Not yet tested in other applications.
Purification :	The antibody was affinity-purified from rabbit antiserum by affinity-chromatography using epitope-specific immunogen.
Concentration :	1 mg/ml
Storage_stability	-20°C/1 year
:	

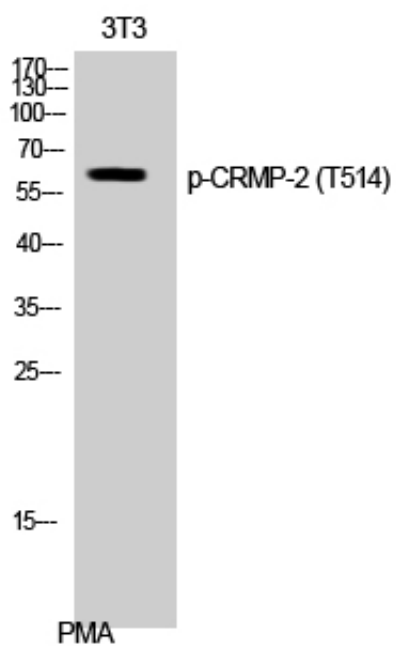


MsdS : MSDS_Antibody.pdf

Other_name : DPYSL2; CRMP2; ULIP2; Dihydropyrimidinase-related protein 2; DRP-2; Collapsin response mediator protein 2; CRMP-2; N2A3; Unc-33-like phosphoprotein 2; ULIP-2

Molecular Weight : 65KD

Product Images



Western Blot analysis of 3T3 cells using Phospho-CRMP-2 (T514) Polyclonal Antibody