

DARPP-32 (phospho Thr34) Polyclonal Antibody

Catalog_no :	AP0950
Applications :	WB,IHC-p,IF,ELISA
Reactivity :	Human,Mouse,Rat
Category :	抗原抗体
Size :	100µg/50µg/20µg
Gene_name :	PPP1R1B
Protein_name :	Protein phosphatase 1 regulatory subunit 1B
Humangene_id :	84152
Humanswissprot_no :	Q9UD71
Mousegene_id :	19049
Mouseswissprot_no :	Q60829
Ratgene_id :	360616
Ratswissprot_no :	Q6J410
Immunogen :	The antiserum was produced against synthesized peptide derived from human DARPP-32 around the phosphorylation site of Thr34. AA range:18-67
Specificity :	Phospho-DARPP-32 (T34) Polyclonal Antibody detects endogenous levels of DARPP-32 protein only when phosphorylated at T34.
Formulation :	Liquid in PBS containing 50% glycerol, 0.5% BSA and 0.02% sodium azide.
Source :	Rabbit
Dilution :	Western Blot: 1/500 - 1/2000. Immunohistochemistry: 1/100 - 1/300. Immunofluorescence: 1/200 - 1/1000. ELISA: 1/10000. Not yet tested in other applications.
Purification :	The antibody was affinity-purified from rabbit antiserum by affinity-chromatography using epitope-specific immunogen.
Concentration :	1 mg/ml
Storage_stability :	-20°C/1 year



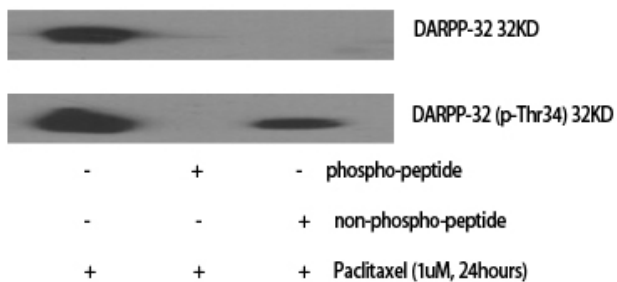
MsdS : MSDS_Antibody.pdf

Other_name : PPP1R1B; DARPP32; Protein phosphatase 1 regulatory subunit 1B; DARPP-32; Dopamine- and cAMP-regulated neuronal phosphoprotein

Molecular Weight : 35KD

Product Images

Western Blot analysis of various cells using Phospho-DARPP-32 (T34) Polyclonal Antibody diluted at 1 : 1000



Western Blot analysis of RAT-muscle cells using Phospho-DARPP-32 (T34) Polyclonal Antibody diluted at 1 : 1000

