

Plk (phospho Thr210) Polyclonal Antibody

Catalog_no :	AP0964
Applications :	WB,IHC-p,ELISA
Reactivity :	Human,Mouse,Rat
Category :	抗原抗体
Size :	100µg/50µg/20µg
Gene_name :	PLK1
Protein_name :	Serine/threonine-protein kinase PLK1
Humangene_id :	5347
Humanswissprot_no :	P53350
Mousegene_id :	18817
Mouseswissprot_no :	Q07832
Ratgene_id :	25515
Ratswissprot_no :	Q62673
Immunogen :	The antiserum was produced against synthesized peptide derived from human PLK1 around the phosphorylation site of Thr210. AA range:176-225
Specificity :	Phospho-Plk (T210) Polyclonal Antibody detects endogenous levels of Plk protein only when phosphorylated at T210.
Formulation :	Liquid in PBS containing 50% glycerol, 0.5% BSA and 0.02% sodium azide.
Source :	Rabbit
Dilution :	Immunohistochemistry: 1/100 - 1/300. ELISA: 1/5000. Not yet tested in other applications.
Purification :	The antibody was affinity-purified from rabbit antiserum by affinity-chromatography using epitope-specific immunogen.
Concentration :	1 mg/ml
Storage_stability :	-20°C/1 year

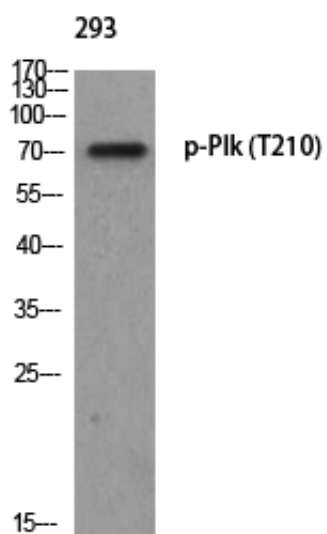


MsdS : MSDS_Antibody.pdf

Other_name : PLK1; PLK; Serine/threonine-protein kinase PLK1; Polo-like kinase 1; PLK-1; Serine/threonine-protein kinase 13; STPK13

Molecular Weight : 70KD

Product Images



Western blot analysis of 293 using p-Plk (T210) antibody.