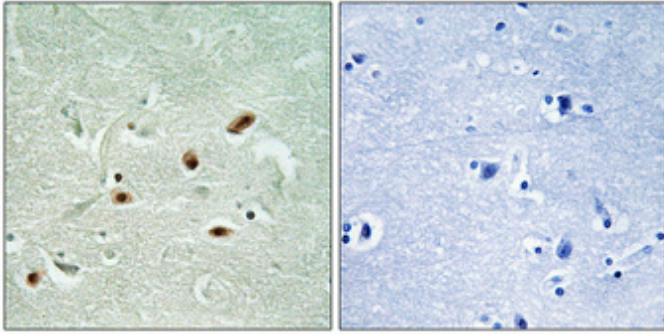


## DNA-PKCS (phospho Ser2612) Polyclonal Antibody

Catalog_no :	AP0986
Applications :	IHC-p,ELISA
Reactivity :	Human
Category :	抗原抗体
Size :	100µg/50µg/20µg
Gene_name :	PRKDC
Protein_name :	DNA-dependent protein kinase catalytic subunit
Humangene_id :	<a href="#">5591</a>
Humanswissprot_no :	<a href="#">P78527</a>
Immunogen :	The antiserum was produced against synthesized peptide derived from human DNA-PK around the phosphorylation site of Ser2612. AA range:2578-2627
Specificity :	Phospho-DNA-PKCS (S2612) Polyclonal Antibody detects endogenous levels of DNA-PKCS protein only when phosphorylated at S2612.
Formulation :	Liquid in PBS containing 50% glycerol, 0.5% BSA and 0.02% sodium azide.
Source :	Rabbit
Dilution :	Immunohistochemistry: 1/100 - 1/300. ELISA: 1/5000. Not yet tested in other applications.
Purification :	The antibody was affinity-purified from rabbit antiserum by affinity-chromatography using epitope-specific immunogen.
Concentration :	1 mg/ml
Storage_stability :	-20°C/1 year
Msds :	MSDS_Antibody.pdf
Other_name :	PRKDC; HYRC; HYRC1; DNA-dependent protein kinase catalytic subunit; DNA-PK catalytic subunit; DNA-PKcs; DNPK1; p460

## Product Images



Immunohistochemical analysis of paraffin-embedded Human brain. Antibody was diluted at 1:100(4°,overnight). High-pressure and temperature Tris-EDTA,pH8.0 was used for antigen retrieval. Negative contrl (right) obtaned from antibody was pre-absorbed by immunogen peptide.