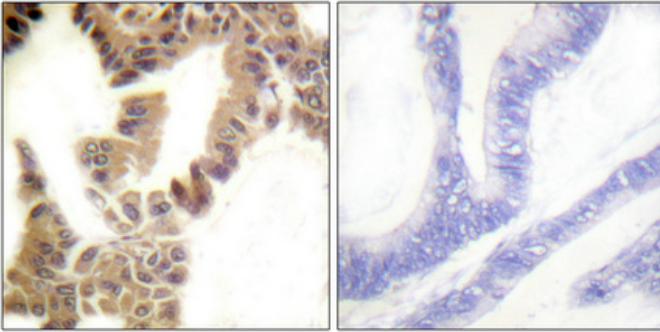


## Caspase-2 (phospho Ser157) Polyclonal Antibody

Catalog_no :	AP0997
Applications :	IHC-p,ELISA
Reactivity :	Human
Category :	抗原抗体
Size :	100µg/50µg/20µg
Gene_name :	CASP2
Protein_name :	Caspase-2
Humangene_id :	<a href="#">835</a>
Humanswissprot_no :	<a href="#">P42575</a>
Immunogen :	The antiserum was produced against synthesized peptide derived from human Caspase 2 around the phosphorylation site of Ser157. AA range:123-172
Specificity :	Phospho-Caspase-2 (S157) Polyclonal Antibody detects endogenous levels of Caspase-2 protein only when phosphorylated at S157.
Formulation :	Liquid in PBS containing 50% glycerol, 0.5% BSA and 0.02% sodium azide.
Source :	Rabbit
Dilution :	Immunohistochemistry: 1/100 - 1/300. ELISA: 1/10000. Not yet tested in other applications.
Purification :	The antibody was affinity-purified from rabbit antiserum by affinity-chromatography using epitope-specific immunogen.
Concentration :	1 mg/ml
Storage_stability :	-20°C/1 year
Msds :	<a href="#">MSDS_Antibody.pdf</a>
Other_name :	CASP2; ICH1; NEDD2; Caspase-2; CASP-2; Neural precursor cell expressed developmentally down-regulated protein 2; NEDD-2; Protease ICH-1

## Product Images



Immunohistochemical analysis of paraffin-embedded Human lung cancer. Antibody was diluted at 1:100(4°,overnight). High-pressure and temperature Tris-EDTA,pH8.0 was used for antigen retrieval. Negative contrl (right) obtaned from antibody was pre-absorbed by immunogen peptide.