

HAND1 (phospho Ser98) Polyclonal Antibody

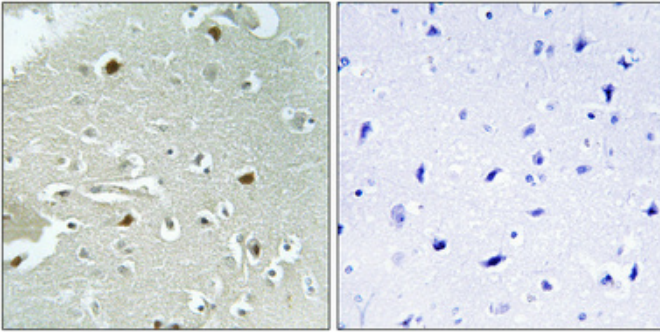
Catalog_no :	AP0998
Applications :	IHC-p,ELISA
Reactivity :	Human,Mouse,Rat
Category :	抗原抗体
Size :	100µg/50µg/20µg
Gene_name :	HAND1
Protein_name :	Heart- and neural crest derivatives-expressed protein 1
Humangene_id :	9421
Humanswissprot_no :	O96004
Mousegene_id :	15110
Mouseswissprot_no :	Q64279
Ratgene_id :	59112
Ratswissprot_no :	P97832
Immunogen :	The antiserum was produced against synthesized peptide derived from human HAND1 around the phosphorylation site of Ser98. AA range:71-120
Specificity :	Phospho-HAND1 (S98) Polyclonal Antibody detects endogenous levels of HAND1 protein only when phosphorylated at S98.
Formulation :	Liquid in PBS containing 50% glycerol, 0.5% BSA and 0.02% sodium azide.
Source :	Rabbit
Dilution :	Immunohistochemistry: 1/100 - 1/300. ELISA: 1/10000. Not yet tested in other applications.
Purification :	The antibody was affinity-purified from rabbit antiserum by affinity-chromatography using epitope-specific immunogen.
Concentration :	1 mg/ml
Storage_stability :	-20°C/1 year



MsdS : [MSDS_Antibody.pdf](#)

Other_name : [HAND1; BHLHA27; EHAND; Heart- and neural crest derivatives-expressed protein 1; Class A basic helix-loop-helix protein 27; bHLHa27; Extraembryonic tissues; heart, autonomic nervous system and neural crest derivatives-expressed protein 1; eH](#)

Product Images



Immunohistochemical analysis of paraffin-embedded Human brain. Antibody was diluted at 1:100(4°,overnight). High-pressure and temperature Tris-EDTA,pH8.0 was used for antigen retrieval. Negative contrl (right) obtaned from antibody was pre-absorbed by immunogen peptide.