

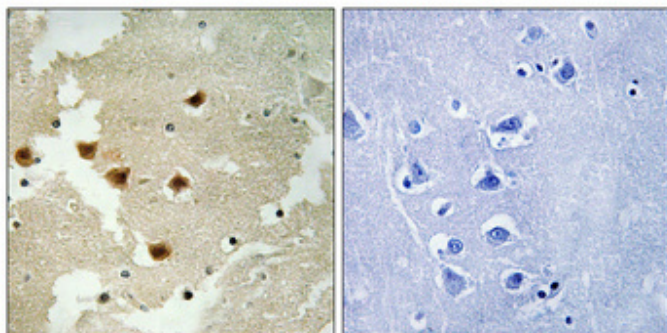
Huntingtin (phospho Ser421) Polyclonal Antibody

Catalog_no :	AP1000
Applications :	IHC-p,ELISA
Reactivity :	Human,Mouse,Rat
Category :	抗原抗体
Size :	100µg/50µg/20µg
Gene_name :	HTT
Protein_name :	Huntingtin
Humangene_id :	3064
Humanswissprot_no :	P42858
Mousegene_id :	15194
Mouseswissprot_no :	P42859
Ratswissprot_no :	P51111
Immunogen :	The antiserum was produced against synthesized peptide derived from human Huntingtin around the phosphorylation site of Ser421. AA range:387-436
Specificity :	Phospho-Huntingtin (S421) Polyclonal Antibody detects endogenous levels of Huntingtin protein only when phosphorylated at S421.
Formulation :	Liquid in PBS containing 50% glycerol, 0.5% BSA and 0.02% sodium azide.
Source :	Rabbit
Dilution :	Immunohistochemistry: 1/100 - 1/300. ELISA: 1/5000. Not yet tested in other applications.
Purification :	The antibody was affinity-purified from rabbit antiserum by affinity-chromatography using epitope-specific immunogen.
Concentration :	1 mg/ml
Storage_stability :	-20°C/1 year
Msds :	MSDS_Antibody.pdf



Other_name : HTT; HD; IT15; Huntingtin; Huntington disease protein; HD protein

Product Images



Immunohistochemical analysis of paraffin-embedded Human brain. Antibody was diluted at 1:100(4°,overnight). High-pressure and temperature Tris-EDTA,pH8.0 was used for antigen retrieval. Negative contrl (right) obtaned from antibody was pre-absorbed by immunogen peptide.