

## Emt (phospho Tyr512) Polyclonal Antibody

Catalog_no :	AP1004
Applications :	WB,IHC-p,ELISA
Reactivity :	Human,Mouse
Category :	抗原抗体
Size :	100µg/50µg/20µg
Gene_name :	ITK
Protein_name :	Tyrosine-protein kinase ITK/TSK
Humangene_id :	<a href="#">3702</a>
Humanswissprot_no :	<a href="#">Q08881</a>
Mousegene_id :	<a href="#">16428</a>
Mouseswissprot_no :	<a href="#">Q03526</a>
Immunogen :	The antiserum was produced against synthesized peptide derived from human ITK around the phosphorylation site of Tyr512. AA range:478-527
Specificity :	Phospho-Emt (Y512) Polyclonal Antibody detects endogenous levels of Emt protein only when phosphorylated at Y512.
Formulation :	Liquid in PBS containing 50% glycerol, 0.5% BSA and 0.02% sodium azide.
Source :	Rabbit
Dilution :	Immunohistochemistry: 1/100 - 1/300. ELISA: 1/5000. Not yet tested in other applications.
Purification :	The antibody was affinity-purified from rabbit antiserum by affinity-chromatography using epitope-specific immunogen.
Concentration :	1 mg/ml
Storage_stability :	-20°C/1 year
Msds :	<a href="#">MSDS_Antibody.pdf</a>
Other_name :	ITK; EMT; LYK; Tyrosine-protein kinase ITK/TSK; Interleukin-2-inducible T-cell kinase; IL-2-inducible T-cell kinase; Kinase EMT; T-cell-specific kinase; Tyrosine-protein kinase Lyk

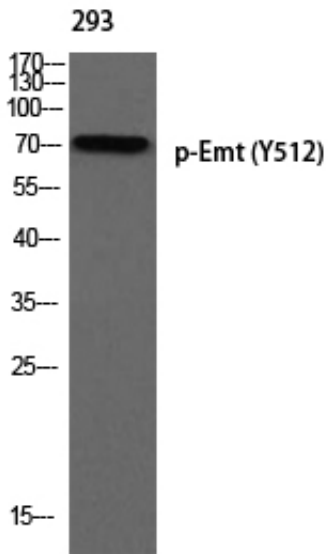


Molecular  
Weight :

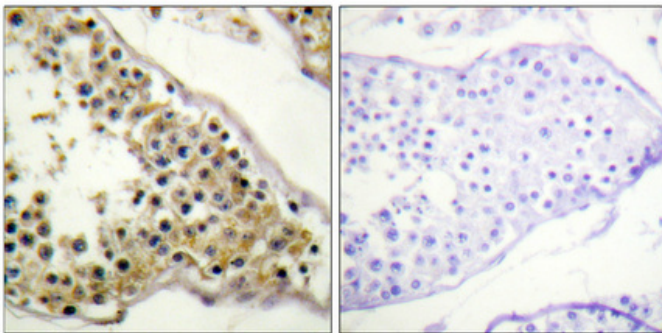
72KD

---

## Product Images



Western blot analysis of 293 using p-Emt (Y512) antibody.



Immunohistochemical analysis of paraffin-embedded Human testis. Antibody was diluted at 1:100(4°, overnight). High-pressure and temperature Tris-EDTA, pH8.0 was used for antigen retrieval. Negative control (right) obtained from antibody was pre-absorbed by immunogen peptide.