

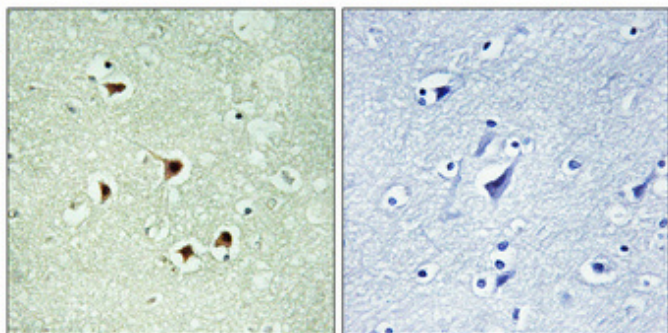
Max (phospho Ser2) Polyclonal Antibody

Catalog_no :	AP1009
Applications :	IHC-p,ELISA
Reactivity :	Human,Mouse,Rat
Category :	抗原抗体
Size :	100µg/50µg/20µg
Gene_name :	MAX
Protein_name :	Protein max
Humangene_id	4149
:	
Humanswissprot	P61244
_no :	
Mouseswissprot	P28574
_no :	
Ratgene_id :	60661
Ratswissprot_no	P52164
:	
Immunogen :	The antiserum was produced against synthesized peptide derived from human MAX around the phosphorylation site of Ser2. AA range:1-50
Specificity :	Phospho-Max (S2) Polyclonal Antibody detects endogenous levels of Max protein only when phosphorylated at S2.
Formulation :	Liquid in PBS containing 50% glycerol, 0.5% BSA and 0.02% sodium azide.
Source :	Rabbit
Dilution :	Immunohistochemistry: 1/100 - 1/300. ELISA: 1/5000. Not yet tested in other applications.
Purification :	The antibody was affinity-purified from rabbit antiserum by affinity-chromatography using epitope-specific immunogen.
Concentration :	1 mg/ml
Storage_stability	-20°C/1 year
:	
Msds :	MSDS_Antibody.pdf



Other_name : MAX; BHLHD4; Protein max; Class D basic helix-loop-helix protein 4; bHLHd4; Myc-associated factor X

Product Images



Immunohistochemical analysis of paraffin-embedded Human brain. Antibody was diluted at 1:100(4°,overnight). High-pressure and temperature Tris-EDTA,pH8.0 was used for antigen retrieval. Negative contrl (right) obtaned from antibody was pre-absorbed by immunogen peptide.