

Cdk1/Cdc2 (phospho Thr161) Polyclonal Antibody

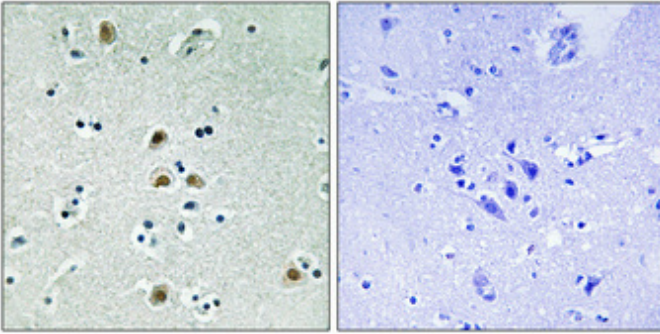
Catalog_no :	AP1039
Applications :	IHC-p,ELISA
Reactivity :	Human,Mouse,Rat
Category :	抗原抗体
Size :	100µg/50µg/20µg
Gene_name :	CDK1
Protein_name :	Cyclin-dependent kinase 1
Humangene_id	983
:	
Humanswissprot	P06493
_no :	
Mousegene_id :	12534
Mouseswissprot	P11440
_no :	
Ratgene_id :	54237
Ratswissprot_no	P39951
:	
Immunogen :	The antiserum was produced against synthesized peptide derived from human CDK1/CDC2 around the phosphorylation site of Thr161. AA range:126-175
Specificity :	Phospho-Cdk1/Cdc2 (T161) Polyclonal Antibody detects endogenous levels of Cdk1/Cdc2 protein only when phosphorylated at T161.
Formulation :	Liquid in PBS containing 50% glycerol, 0.5% BSA and 0.02% sodium azide.
Source :	Rabbit
Dilution :	Immunohistochemistry: 1/100 - 1/300. ELISA: 1/5000. Not yet tested in other applications.
Purification :	The antibody was affinity-purified from rabbit antiserum by affinity-chromatography using epitope-specific immunogen.
Concentration :	1 mg/ml
Storage_stability	-20°C/1 year
:	



MsdS : [MSDS_Antibody.pdf](#)

Other_name : [CDK1; CDC2; CDC28A; CDKN1; P34CDC2; Cyclin-dependent kinase 1; CDK1; Cell division control protein 2 homolog; Cell division protein kinase 1; p34 protein kinase](#)

Product Images



Immunohistochemical analysis of paraffin-embedded Human brain. Antibody was diluted at 1:100(4°,overnight). High-pressure and temperature Tris-EDTA,pH8.0 was used for antigen retrieval. Negative contrl (right) obtaned from antibody was pre-absorbed by immunogen peptide.