

p70 S6 kinase α (phospho Ser427) Polyclonal Antibody

Catalog_no :	AP1053
Applications :	WB,IHC-p,ELISA
Reactivity :	Human,Mouse,Rat
Category :	抗原抗体
Size :	100 μ g/50 μ g/20 μ g
Gene_name :	RPS6KB1
Protein_name :	Ribosomal protein S6 kinase beta-1
Humangene_id	6198
:	
Humanswissprot	P23443
_no :	
Mousegene_id :	72508
Mouseswissprot	Q8BSK8
_no :	
Ratgene_id :	83840
Ratswissprot_no	P67999
:	
Immunogen :	The antiserum was produced against synthesized peptide derived from human p70 S6 Kinase around the phosphorylation site of Ser427. AA range:393-442
Specificity :	Phospho-p70 S6 kinase α (S427) Polyclonal Antibody detects endogenous levels of p70 S6 kinase α protein only when phosphorylated at S427.
Formulation :	Liquid in PBS containing 50% glycerol, 0.5% BSA and 0.02% sodium azide.
Source :	Rabbit
Dilution :	Immunohistochemistry: 1/100 - 1/300. ELISA: 1/40000. Not yet tested in other applications.
Purification :	The antibody was affinity-purified from rabbit antiserum by affinity-chromatography using epitope-specific immunogen.
Concentration :	1 mg/ml
Storage_stability	-20°C/1 year
:	

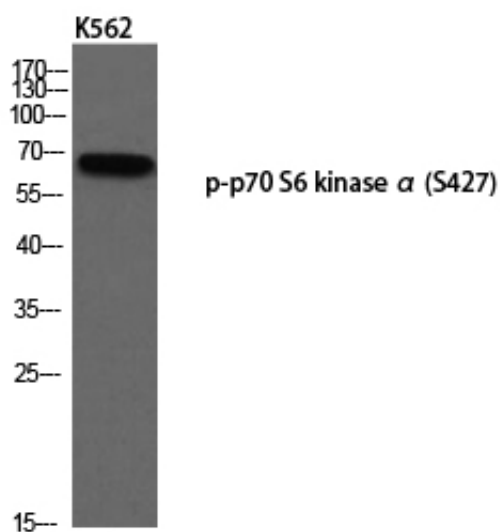


MsdS : [MSDS_Antibody.pdf](#)

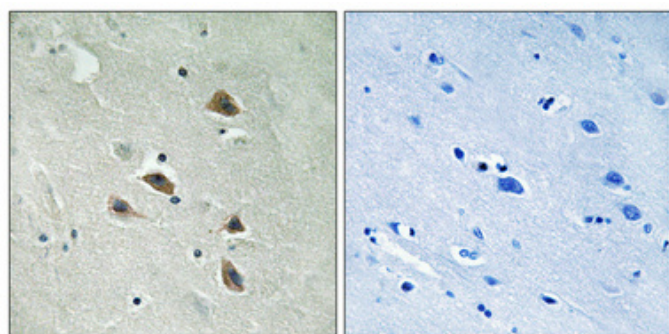
Other_name : [RPS6KB1; STK14A; Ribosomal protein S6 kinase beta-1; S6K-beta-1; S6K1; 70 kDa ribosomal protein S6 kinase 1; P70S6K1; p70-S6K 1; Ribosomal protein S6 kinase I; Serine/threonine-protein kinase 14A; p70 ribosomal S6 kinase alpha; p70 S6 kinas](#)

Molecular Weight : [70KD](#)

Product Images



Western blot analysis of K562 using p-p70 S6 kinase α (S427) antibody.



Immunohistochemical analysis of paraffin-embedded Human brain. Antibody was diluted at 1:100(4°, overnight). High-pressure and temperature Tris-EDTA, pH8.0 was used for antigen retrieval. Negative control (right) obtained from antibody was pre-absorbed by immunogen peptide.