

Flt-1 (phospho Tyr1048) Polyclonal Antibody

Catalog_no :	AP1063
Applications :	WB,IHC-p,ELISA
Reactivity :	Human,Mouse,Rat
Category :	抗原抗体
Size :	100µg/50µg/20µg
Gene_name :	FLT1
Protein_name :	Vascular endothelial growth factor receptor 1
Humangene_id :	2321
Humanswissprot_no :	P17948
Mousegene_id :	14254
Mouseswissprot_no :	P35969
Ratgene_id :	54251
Ratswissprot_no :	P53767
Immunogen :	The antiserum was produced against synthesized peptide derived from human VEGFR1 around the phosphorylation site of Tyr1048. AA range:1016-1065
Specificity :	Phospho-Flt-1 (Y1048) Polyclonal Antibody detects endogenous levels of Flt-1 protein only when phosphorylated at Y1048.
Formulation :	Liquid in PBS containing 50% glycerol, 0.5% BSA and 0.02% sodium azide.
Source :	Rabbit
Dilution :	Immunohistochemistry: 1/100 - 1/300. ELISA: 1/5000. Not yet tested in other applications.
Purification :	The antibody was affinity-purified from rabbit antiserum by affinity-chromatography using epitope-specific immunogen.
Concentration :	1 mg/ml
Storage_stability :	-20°C/1 year

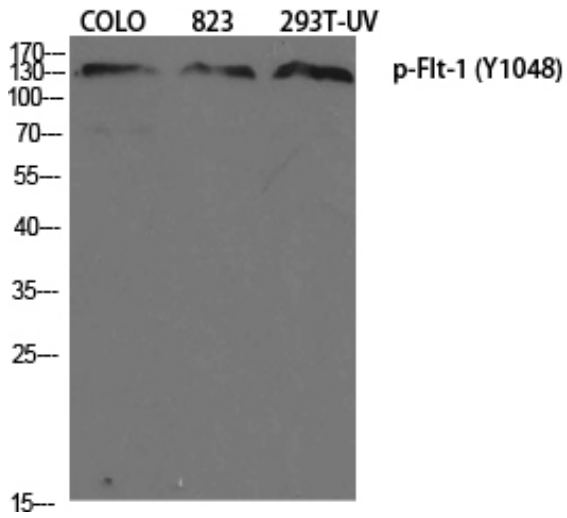


Msd : [MSDS_Antibody.pdf](#)

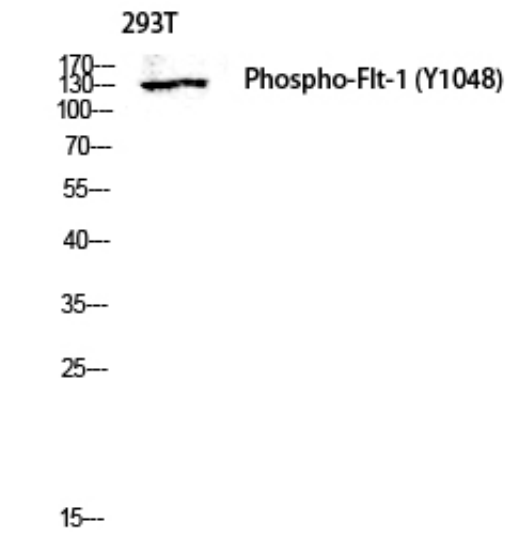
Other_name : FLT1; FLT; FRT; VEGFR1; Vascular endothelial growth factor receptor 1; VEGFR-1; Fms-like tyrosine kinase 1; FLT-1; Tyrosine-protein kinase FRT; Tyrosine-protein kinase receptor FLT; FLT; Vascular permeability factor receptor

Molecular Weight : 150KD

Product Images



Western Blot analysis of various cells using Phospho-Flt-1 (Y1048) Polyclonal Antibody diluted at 1 : 1000



Western blot analysis of 293T lysis using Phospho-Flt-1 (Y1048) antibody. Antibody was diluted at 1:1000