

## Bim (phospho Ser59) Polyclonal Antibody

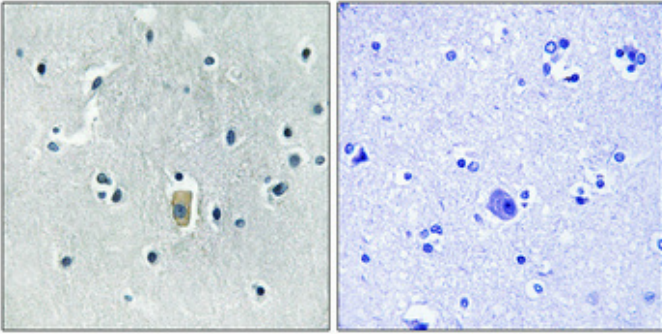
Catalog_no :	AP1065
Applications :	IHC-p,ELISA
Reactivity :	Human,Mouse,Rat
Category :	抗原抗体
Size :	100µg/50µg/20µg
Gene_name :	BCL2L11
Protein_name :	Bcl-2-like protein 11
Humangene_id	<a href="#">10018</a>
:	
Humanswissprot	<a href="#">O43521</a>
_no :	
Mousegene_id :	<a href="#">12125</a>
Mouseswissprot	<a href="#">O54918</a>
_no :	
Ratgene_id :	<a href="#">64547</a>
Ratswissprot_no	<a href="#">O88498</a>
:	
Immunogen :	The antiserum was produced against synthesized peptide derived from human BIM around the phosphorylation site of Ser59. AA range:31-80
Specificity :	Phospho-Bim (S59) Polyclonal Antibody detects endogenous levels of Bim protein only when phosphorylated at S59.
Formulation :	Liquid in PBS containing 50% glycerol, 0.5% BSA and 0.02% sodium azide.
Source :	Rabbit
Dilution :	Immunohistochemistry: 1/100 - 1/300. ELISA: 1/40000. Not yet tested in other applications.
Purification :	The antibody was affinity-purified from rabbit antiserum by affinity-chromatography using epitope-specific immunogen.
Concentration :	1 mg/ml
Storage_stability	-20°C/1 year
:	



Msd : [MSDS\\_Antibody.pdf](#)

Other\_name : [BCL2L11; BIM; Bcl-2-like protein 11; Bcl2-L-11; Bcl2-interacting mediator of cell death](#)

## Product Images



Immunohistochemical analysis of paraffin-embedded Human brain. Antibody was diluted at 1:100(4°,overnight). High-pressure and temperature Tris-EDTA,pH8.0 was used for antigen retrieval. Negative contrl (right) obtaned from antibody was pre-absorbed by immunogen peptide.