

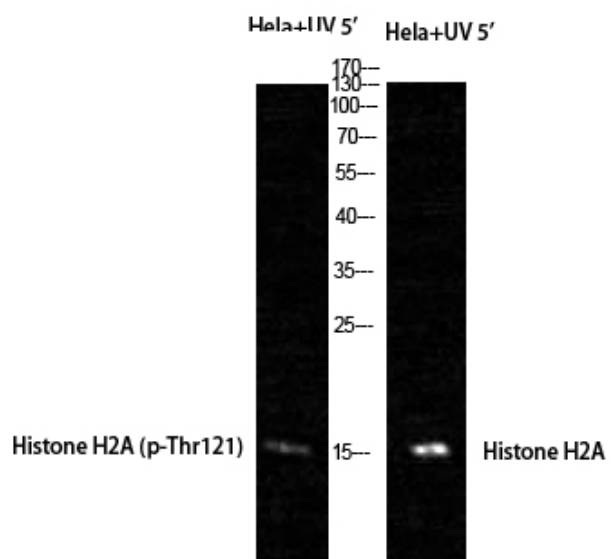
Histone H2A (phospho Thr121) Polyclonal Antibody

Catalog_no :	<u>AP1071</u>
Applications :	<u>WB,IHC-p,ELISA</u>
Reactivity :	<u>Human,Mouse,Rat</u>
Category :	<u>抗原抗体</u>
Size :	<u>100µg/50µg/20µg</u>
Gene_name :	<u>HIST1H2AB</u>
Protein_name :	<u>Histone H2A type 1-B/E</u>
Humangene_id :	<u>8329/8332/8336/8969/3012/8335/3013/85235/723790/8337/92815</u>
Humanswissprot_no :	<u>P0C0S8/P04908/P20671/Q96KK5/Q6FI13/Q7L7L0</u>
Mousegene_id :	<u>319164/319168</u>
Ratswissprot_no :	<u>P02262</u>
Immunogen :	<u>The antiserum was produced against synthesized peptide derived from human Histone H2A around the phosphorylation site of Thr121. AA range:81-130</u>
Specificity :	<u>Phospho-Histone H2A (T121) Polyclonal Antibody detects endogenous levels of Histone H2A protein only when phosphorylated at T121.</u>
Formulation :	<u>Liquid in PBS containing 50% glycerol, 0.5% BSA and 0.02% sodium azide.</u>
Source :	<u>Rabbit</u>
Dilution :	<u>Immunohistochemistry: 1/100 - 1/300. ELISA: 1/5000. Not yet tested in other applications.</u>
Purification :	<u>The antibody was affinity-purified from rabbit antiserum by affinity-chromatography using epitope-specific immunogen.</u>
Concentration :	<u>1 mg/ml</u>
Storage_stability :	<u>-20°C/1 year</u>
Msds :	<u>MSDS_Antibody.pdf</u>
Other_name :	<u>HIST1H2AG; H2AFP; HIST1H2AI; H2AFC; HIST1H2AK; H2AFD; HIST1H2AL; H2AFI; HIST1H2AM; H2AFN; Histone H2A type 1; H2A.1; Histone H2A/p; HIST1H2AB; H2AFM; HIST1H2AE; H2AFA; Histone H2A type 1-B/E; Histone H2A.2; Histone H2A/a; Histone</u>



H2A/m; HIS

Product Images



Western Blot analysis of HeLa+UV 5' cells using Phospho-Histone H2A (T121) Polyclonal Antibody cells nucleus extracted by Minute TM Cytoplasmic and Nuclear Fractionation kit (SC-003, Invent biotech, MN, USA).