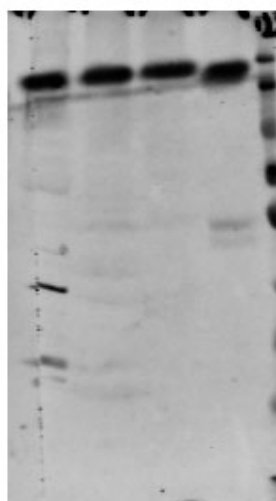


IGF1R (Phospho-Tyr1161) Antibody

Catalog_no :	AP1219
Applications :	WB,ELISA
Reactivity :	Human,Mouse,Rat
Category :	抗原抗体
Size :	100µg/50µg/20µg
Gene_name :	IGF1R
Protein_name :	Insulin-like growth factor 1 receptor (EC 2.7.10.1) (Insulin-like growth factor I receptor) (IGF-I receptor) (CD antigen CD221) [Cleaved into: Insulin-like growth factor 1 receptor alpha chain; Insulin-like growth factor 1 receptor beta chain]
Humangene_id :	3480
Humanswissprot_no :	P08069
Immunogen :	Synthesized phospho derived from human IGF1R (Phospho-Tyr1161)
Specificity :	This detects endogenous levels of IGF1R (Phospho-Tyr1161)
Formulation :	Liquid in PBS containing 50% glycerol, 0.5% BSA and 0.02% sodium azide.
Source :	Rabbit
Dilution :	WB 1:500-2000, ELISA 1:10000-20000
Purification :	The antibody was affinity-purified from rabbit antiserum by affinity-chromatography using epitope-specific immunogen.
Concentration :	1 mg/ml
Storage_stability :	-20°C/1 year
Msds :	MSDS_Antibody.pdf
Other_name :	Insulin-like growth factor 1 receptor (EC 2.7.10.1) (Insulin-like growth factor I receptor) (IGF-I receptor) (CD antigen CD221) [Cleaved into: Insulin-like growth factor 1 receptor alpha chain; Insulin-like growth factor 1 receptor beta chain]
Molecular Weight :	155KD

Product Images

1 2 3 4

170
130
100
70
55
40
35
251 customer' s
2 3T3
3 CAC02
4 mouse-liver

Western blot analysis of various lysate, antibody was diluted at 1000. Secondary antibody was diluted at 1:20000