



ABHD12 Polyclonal Antibody

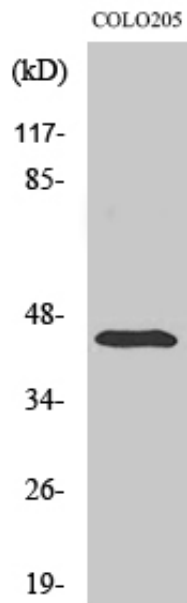
Catalog_no :	<u>AT0055</u>
Applications :	<u>WB,IHC-p,ELISA</u>
Reactivity :	<u>Human,Mouse,Rat</u>
Category :	<u>抗原抗体</u>
Size :	<u>100µg/50µg/20µg</u>
Gene_name :	<u>ABHD12</u>
Protein_name :	<u>Monoacylglycerol lipase ABHD12</u>
Humangene_id :	<u>26090</u>
Humanswissprot_no :	<u>Q8N2K0</u>
Mousegene_id :	<u>76192</u>
Mouseswissprot_no :	<u>Q99LR1</u>
Ratgene_id :	<u>499913</u>
Ratswissprot_no :	<u>Q6AYT7</u>
Immunogen :	<u>The antiserum was produced against synthesized peptide derived from human ABHD12. AA range:231-280</u>
Specificity :	<u>ABHD12 Polyclonal Antibody detects endogenous levels of ABHD12 protein.</u>
Formulation :	<u>Liquid in PBS containing 50% glycerol, 0.5% BSA and 0.02% sodium azide.</u>
Source :	<u>Rabbit</u>
Dilution :	<u>Western Blot: 1/500 - 1/2000. Immunohistochemistry: 1/100 - 1/300. ELISA: 1/40000. Not yet tested in other applications.</u>
Purification :	<u>The antibody was affinity-purified from rabbit antiserum by affinity-chromatography using epitope-specific immunogen.</u>
Concentration :	<u>1 mg/ml</u>
Storage_stability :	<u>-20°C/1 year</u>
Msds :	<u>MSDS_Antibody.pdf</u>



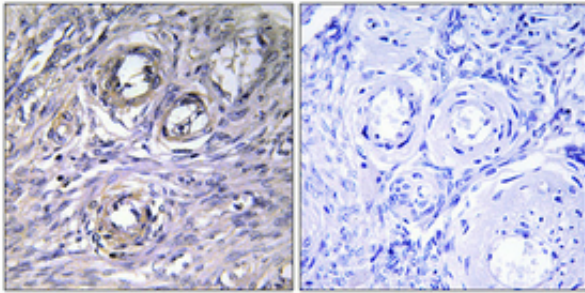
Other_name : ABHD12; C20orf22; Monoacylglycerol lipase ABHD12; 2-arachidonoylglycerol hydrolase; Abhydrolase domain-containing protein 12

Molecular Weight : 45KD

Product Images



Western Blot analysis of various cells using ABHD12 Polyclonal Antibody



Immunohistochemical analysis of paraffin-embedded Human ovary. Antibody was diluted at 1:100(4°,overnight). High-pressure and temperature Tris-EDTA,pH8.0 was used for antigen retrieval. Negative contrl (right) obtaned from antibody was pre-absorbed by immunogen peptide.