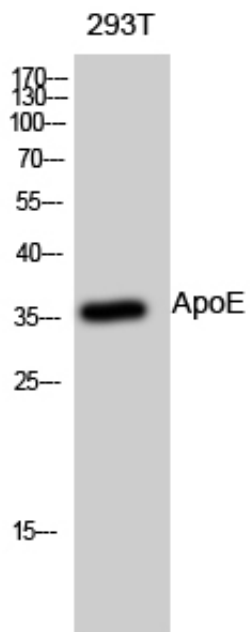


## ApoE Polyclonal Antibody

Catalog_no :	AT0274
Applications :	WB,ELISA
Reactivity :	Human
Category :	抗原抗体
Size :	100µg/50µg/20µg
Gene_name :	APOE
Protein_name :	Apolipoprotein E
Humangene_id	<a href="#">348</a>
:	
Humanswissprot	<a href="#">P02649</a>
_no :	
Immunogen :	Synthesized peptide derived from the Internal region of human ApoE.
Specificity :	ApoE Polyclonal Antibody detects endogenous levels of ApoE protein.
Formulation :	Liquid in PBS containing 50% glycerol, 0.5% BSA and 0.02% sodium azide.
Source :	Rabbit
Dilution :	Western Blot: 1/500 - 1/2000. ELISA: 1/10000. Not yet tested in other applications.
Purification :	The antibody was affinity-purified from rabbit antiserum by affinity-chromatography using epitope-specific immunogen.
Concentration :	1 mg/ml
Storage_stability	-20°C/1 year
:	
Msds :	MSDS_Antibody.pdf
Other_name :	APOE; Apolipoprotein E; Apo-E
Molecular	36KD
Weight :	

## Product Images



Western Blot analysis of 293T cells using ApoE Polyclonal Antibody diluted at 1 : 500