

AQP2 Polyclonal Antibody

Catalog_no :	AT0290
Applications :	WB,IHC-p,IF,ELISA
Reactivity :	Human,Mouse,Rat,Monkey
Category :	抗原抗体
Size :	100µg/50µg/20µg
Gene_name :	AQP2
Protein_name :	Aquaporin-2
Humangene_id :	359
Humanswissprot_no :	P41181
Mousegene_id :	11827
Mouseswissprot_no :	P56402
Ratgene_id :	25386
Ratswissprot_no :	P34080
Immunogen :	The antiserum was produced against synthesized peptide derived from human Aquaporin 2. AA range:222-271
Specificity :	AQP2 Polyclonal Antibody detects endogenous levels of AQP2 protein.
Formulation :	Liquid in PBS containing 50% glycerol, 0.5% BSA and 0.02% sodium azide.
Source :	Rabbit
Dilution :	Western Blot: 1/500 - 1/2000. Immunohistochemistry: 1/100 - 1/300. Immunofluorescence: 1/200 - 1/1000. ELISA: 1/10000. Not yet tested in other applications.
Purification :	The antibody was affinity-purified from rabbit antiserum by affinity-chromatography using epitope-specific immunogen.
Concentration :	1 mg/ml
Storage_stability :	-20°C/1 year

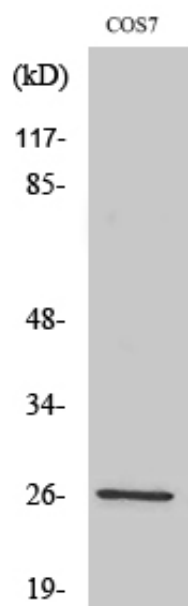


MsdS : MSDS_Antibody.pdf

Other_name : AQP2; Aquaporin-2; AQP-2; ADH water channel; Aquaporin-CD; AQP-CD; Collecting duct water channel protein; WCH-CD; Water channel protein for renal collecting duct

Molecular Weight : 29KD

Product Images



Western Blot analysis of various cells using AQP2 Polyclonal Antibody