

## A-Raf Polyclonal Antibody

Catalog_no :	AT0304
Applications :	WB,ELISA
Reactivity :	Human,Mouse,Rat,Monkey
Category :	抗原抗体
Size :	100µg/50µg/20µg
Gene_name :	ARAF
Protein_name :	Serine/threonine-protein kinase A-Raf
Humangene_id :	<a href="#">369</a>
Humanswissprot_no :	<a href="#">P10398</a>
Mousegene_id :	<a href="#">11836</a>
Mouseswissprot_no :	<a href="#">P04627</a>
Ratgene_id :	<a href="#">64363</a>
Ratswissprot_no :	<a href="#">P14056</a>
Immunogen :	The antiserum was produced against synthesized peptide derived from human A-RAF. AA range:241-290
Specificity :	A-Raf Polyclonal Antibody detects endogenous levels of A-Raf protein.
Formulation :	Liquid in PBS containing 50% glycerol, 0.5% BSA and 0.02% sodium azide.
Source :	Rabbit
Dilution :	Western Blot: 1/500 - 1/2000. ELISA: 1/20000. Not yet tested in other applications.
Purification :	The antibody was affinity-purified from rabbit antiserum by affinity-chromatography using epitope-specific immunogen.
Concentration :	1 mg/ml
Storage_stability :	-20°C/1 year
Msds :	<a href="#">MSDS_Antibody.pdf</a>



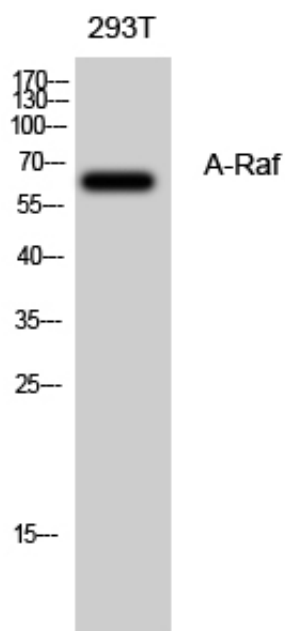
Other\_name : ARAF; ARAF1; PKS; PKS2; Serine/threonine-protein kinase A-Raf; Proto-oncogene A-Raf;  
Proto-oncogene A-Raf-1; Proto-oncogene Pks

---

Molecular Weight : 68KD

---

## Product Images



Western Blot analysis of 293T cells using A-Raf  
Polyclonal Antibody diluted at 1 : 500