

ARF GAP1 Polyclonal Antibody

Catalog_no :	AT0306
Applications :	WB,IHC-p,IF,ELISA
Reactivity :	Human,Mouse,Rat,Monkey
Category :	抗原抗体
Size :	100µg/50µg/20µg
Gene_name :	ARFGAP1
Protein_name :	ADP-ribosylation factor GTPase-activating protein 1
Humangene_id :	55738
Humanswissprot_no :	Q8N6T3
Mousegene_id :	228998
Mouseswissprot_no :	Q9EPJ9
Ratgene_id :	246310
Ratswissprot_no :	Q62848
Immunogen :	The antiserum was produced against synthesized peptide derived from human ARFGAP1. AA range:171-220
Specificity :	ARF GAP1 Polyclonal Antibody detects endogenous levels of ARF GAP1 protein.
Formulation :	Liquid in PBS containing 50% glycerol, 0.5% BSA and 0.02% sodium azide.
Source :	Rabbit
Dilution :	Western Blot: 1/500 - 1/2000. Immunohistochemistry: 1/100 - 1/300. Immunofluorescence: 1/200 - 1/1000. ELISA: 1/20000. Not yet tested in other applications.
Purification :	The antibody was affinity-purified from rabbit antiserum by affinity-chromatography using epitope-specific immunogen.
Concentration :	1 mg/ml
Storage_stability :	-20°C/1 year

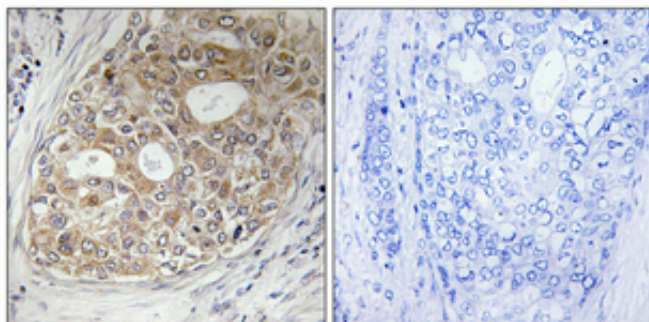


Msd : MSDS_Antibody.pdf

Other_name : ARFGAP1; ARF1GAP; ADP-ribosylation factor GTPase-activating protein 1; ARF GAP 1; ADP-ribosylation factor 1 GTPase-activating protein; ARF1 GAP; ARF1-directed GTPase-activating protein

Molecular Weight : 48KD

Product Images



Immunohistochemical analysis of paraffin-embedded Human breast cancer. Antibody was diluted at 1:100(4°,overnight). High-pressure and temperature Tris-EDTA,pH8.0 was used for antigen retrieval. Negative contrl (right) obtaned from antibody was pre-absorbed by immunogen peptide.