

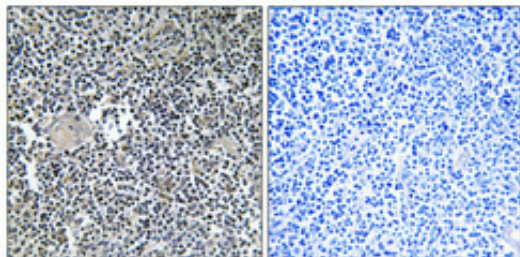
Arfaptin 1 Polyclonal Antibody

Catalog_no :	AT0310
Applications :	WB,IHC-p,IF,ELISA
Reactivity :	Human,Mouse,Rat
Category :	抗原抗体
Size :	100µg/50µg/20µg
Gene_name :	ARFIP1
Protein_name :	Arfaptin-1
Humangene_id :	27236
Humanswissprot_no :	P53367
Ratgene_id :	60382
Ratswissprot_no :	Q9JHU5
Immunogen :	The antiserum was produced against synthesized peptide derived from human ARFIP1. AA range:271-320
Specificity :	Arfaptin 1 Polyclonal Antibody detects endogenous levels of Arfaptin 1 protein.
Formulation :	Liquid in PBS containing 50% glycerol, 0.5% BSA and 0.02% sodium azide.
Source :	Rabbit
Dilution :	Western Blot: 1/500 - 1/2000. Immunohistochemistry: 1/100 - 1/300. Immunofluorescence: 1/200 - 1/1000. ELISA: 1/40000. Not yet tested in other applications.
Purification :	The antibody was affinity-purified from rabbit antiserum by affinity-chromatography using epitope-specific immunogen.
Concentration :	1 mg/ml
Storage_stability :	-20°C/1 year
Msds :	MSDS_Antibody.pdf
Other_name :	ARFIP1; Arfaptin-1; ADP-ribosylation factor-interacting protein 1
Molecular	40KD



Weight :

Product Images



Immunohistochemical analysis of paraffin-embedded Human thymus gland. Antibody was diluted at 1:100(4°,overnight). High-pressure and temperature Tris-EDTA,pH8.0 was used for antigen retrieval. Negative contrl (right) obtaned from antibody was pre-absorbed by immunogen peptide.