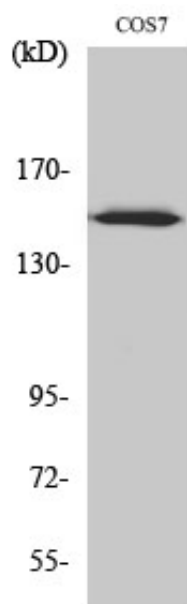




## ARHGEF10 Polyclonal Antibody

Catalog_no :	AT0321
Applications :	WB,IHC-p,ELISA
Reactivity :	Human,Monkey
Category :	抗原抗体
Size :	100µg/50µg/20µg
Gene_name :	ARHGEF10
Protein_name :	Rho guanine nucleotide exchange factor 10
Humangene_id :	<a href="#">9639</a>
Humanswissprot_no :	<a href="#">O15013</a>
Immunogen :	The antiserum was produced against synthesized peptide derived from human ARHGEF10. AA range:339-388
Specificity :	ARHGEF10 Polyclonal Antibody detects endogenous levels of ARHGEF10 protein.
Formulation :	Liquid in PBS containing 50% glycerol, 0.5% BSA and 0.02% sodium azide.
Source :	Rabbit
Dilution :	Western Blot: 1/500 - 1/2000. Immunohistochemistry: 1/100 - 1/300. ELISA: 1/20000. Not yet tested in other applications.
Purification :	The antibody was affinity-purified from rabbit antiserum by affinity-chromatography using epitope-specific immunogen.
Concentration :	1 mg/ml
Storage_stability :	-20°C/1 year
Msds :	<a href="#">MSDS_Antibody.pdf</a>
Other_name :	ARHGEF10; KIAA0294; Rho guanine nucleotide exchange factor 10
Molecular Weight :	152KD

## Product Images



Western Blot analysis of various cells using ARHGEF10 Polyclonal Antibody