

## ARK-1 Polyclonal Antibody

Catalog_no :	AT0326
Applications :	WB,IHC-p,IF,ELISA
Reactivity :	Human,Mouse,Rat,Monkey
Category :	抗原抗体
Size :	100µg/50µg/20µg
Gene_name :	AURKA
Protein_name :	Aurora kinase A
Humangene_id	<a href="#">6790</a>
:	
Humanswissprot	<a href="#">O14965</a>
_no :	
Mousegene_id :	<a href="#">20878</a>
Mouseswissprot	<a href="#">P97477</a>
_no :	
Ratswissprot_no	<a href="#">P59241</a>
:	
Immunogen :	The antiserum was produced against synthesized peptide derived from human AurA. AA range:311-360
Specificity :	ARK-1 Polyclonal Antibody detects endogenous levels of ARK-1 protein.
Formulation :	Liquid in PBS containing 50% glycerol, 0.5% BSA and 0.02% sodium azide.
Source :	Rabbit
Dilution :	Western Blot: 1/500 - 1/2000. Immunohistochemistry: 1/100 - 1/300. Immunofluorescence: 1/200 - 1/1000. ELISA: 1/40000. Not yet tested in other applications.
Purification :	The antibody was affinity-purified from rabbit antiserum by affinity-chromatography using epitope-specific immunogen.
Concentration :	1 mg/ml
Storage_stability	-20°C/1 year
:	
Msds :	<a href="#">MSDS_Antibody.pdf</a>



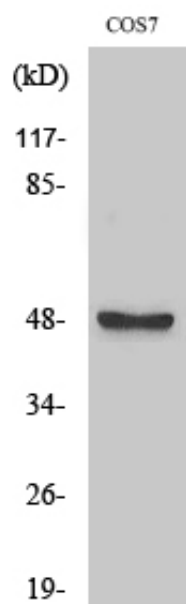
Other\_name : AURKA; AIK; AIRK1; ARK1; AURA; AYK1; BTAK; IAK1; STK15; STK6; Aurora kinase A; Aurora 2; Aurora/IPL1-related kinase 1; ARK-1; Aurora-related kinase 1; hARK1; Breast tumor-amplified kinase; Serine/threonine-protein kinase 15; Serine/threonin

---

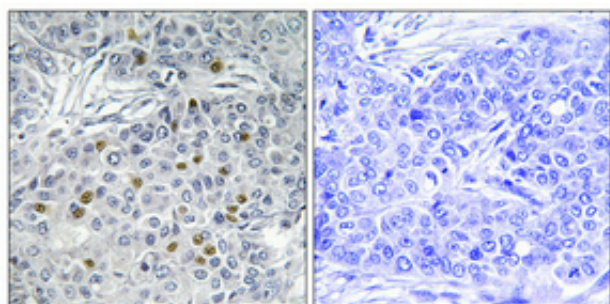
Molecular Weight : 45KD

---

## Product Images



Western Blot analysis of various cells using ARK-1 Polyclonal Antibody



Immunohistochemical analysis of paraffin-embedded Human breast cancer. Antibody was diluted at 1:100(4°,overnight). High-pressure and temperature Tris-EDTA,pH8.0 was used for antigen retrieval. Negative contrl (right) obtaned from antibody was pre-absorbed by immunogen peptide.