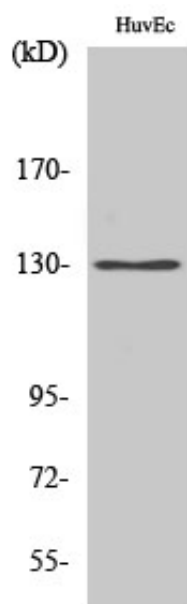


AZI1 Polyclonal Antibody

Catalog_no :	AT0428
Applications :	WB,IHC-p,ELISA
Reactivity :	Human
Category :	抗原抗体
Size :	100µg/50µg/20µg
Gene_name :	AZI1
Protein_name :	5-azacytidine-induced protein 1
Humangene_id :	22994
Humanswissprot_no :	Q9UPN4
Immunogen :	The antiserum was produced against synthesized peptide derived from human AZI1. AA range:311-360
Specificity :	AZI1 Polyclonal Antibody detects endogenous levels of AZI1 protein.
Formulation :	Liquid in PBS containing 50% glycerol, 0.5% BSA and 0.02% sodium azide.
Source :	Rabbit
Dilution :	Western Blot: 1/500 - 1/2000. Immunohistochemistry: 1/100 - 1/300. ELISA: 1/40000. Not yet tested in other applications.
Purification :	The antibody was affinity-purified from rabbit antiserum by affinity-chromatography using epitope-specific immunogen.
Concentration :	1 mg/ml
Storage_stability :	-20°C/1 year
Msds :	MSDS_Antibody.pdf
Other_name :	AZI1; CEP131; KIAA1118; 5-azacytidine-induced protein 1; Centrosomal protein of 131 kDa; Cep131; Pre-acrosome localization protein 1
Molecular Weight :	130KD

Product Images



Western Blot analysis of various cells using AZI1 Polyclonal Antibody